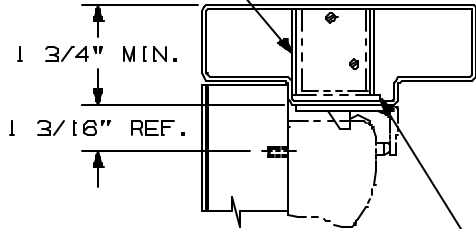


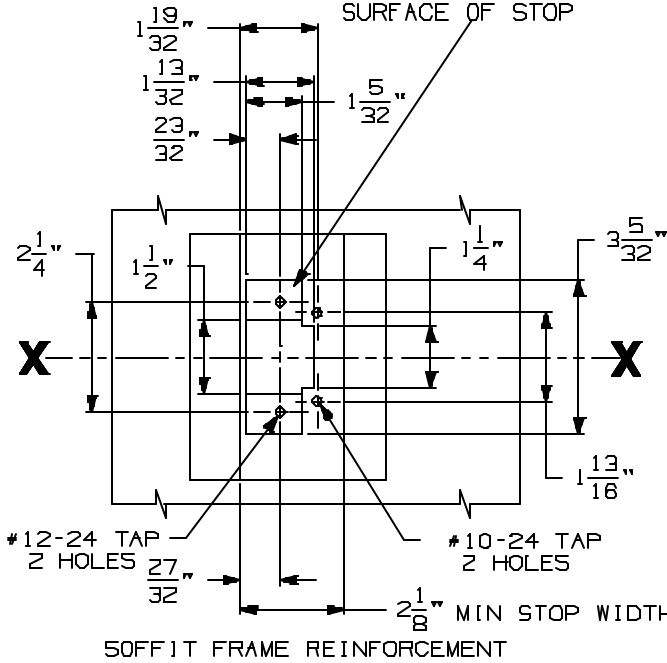
| DEVICE INSTALLATION SCHEDULE | |
|--|--------|
| VERT. ROD & MORT. DEVICE | 2 3/4" |
| TWO VERT. ROD DEVICES | 2 3/4" |
| SINGLE DOOR | 2 3/4" |
| WHEN SURFACE APPLIED COORDINATOR IS USED, BACKSET OF VERTICAL ROD DEVICE MUST BE | |

NOTE: MORTAR GUARD SHOULD BE PROVIDED TO PROTECT SOFFIT LATCH BOLT ASSEMBLY



LHR SHOWN
RHR OPPOSITE

REINFORCING REQUIRED FOR SOFFIT LATCH MUST BE RECESSED 1/8" FROM TOP SURFACE OF STOP

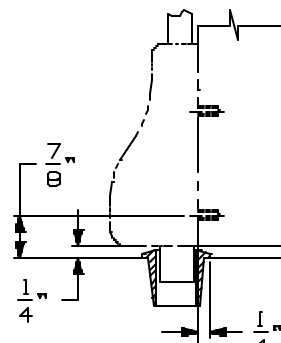


FRAME STOP

#10-24 TAP
16 HOLES

DEVICE
39 13/16" TO FINISHED FLOOR

304L STRIKE APPLICATION

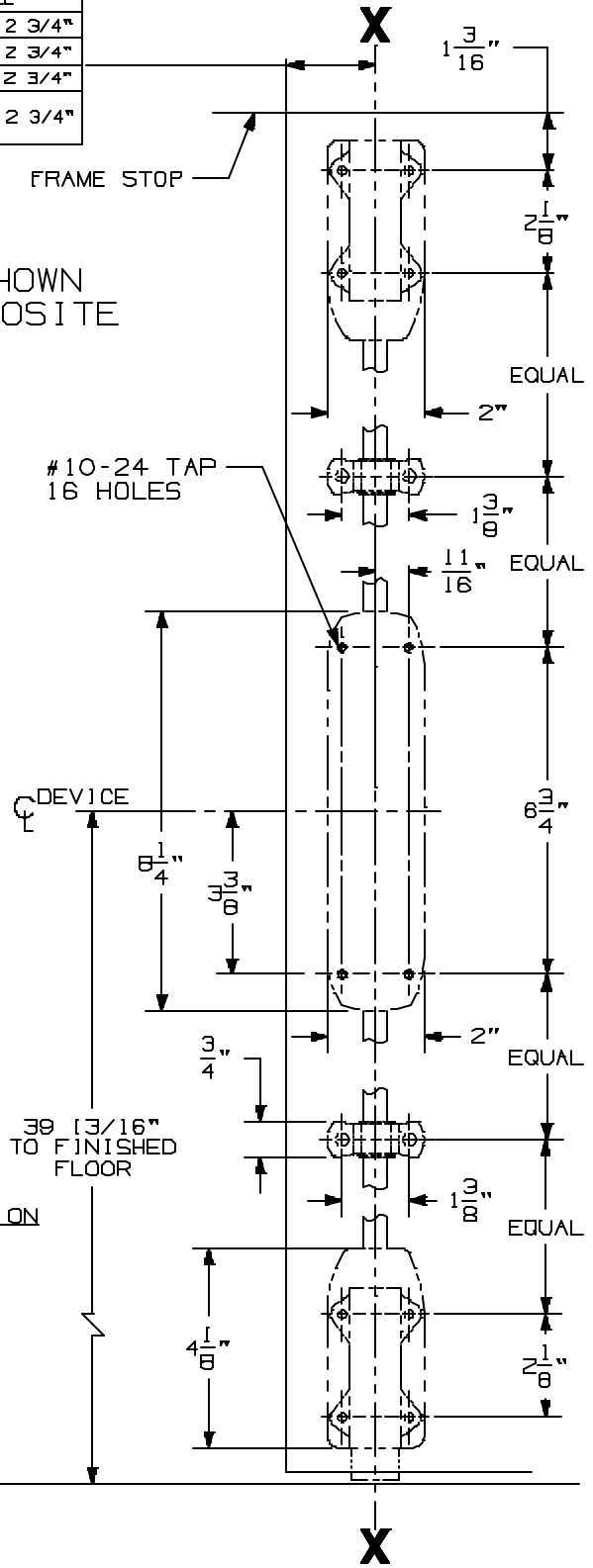


CROSSBAR 36 13/16" FROM FINISHED FLOOR

FOR OUTSIDE TRIM PREPARATION, WHEN REQUIRED, SEE ADDITIONAL TRIM TEMPLATE.

EDGE OF DOOR

INSIDE FACE OF LOCK STILE
LHR DOOR



8827-F & 8827TL-F SURFACE APPLIED DEVICE



NOTE: SEE MASTER SHEET NO. 10001 FOR SUGGESTED REINFORCING

TEMPLATE NUMBER:

10164_6

DATE: 6-1-98