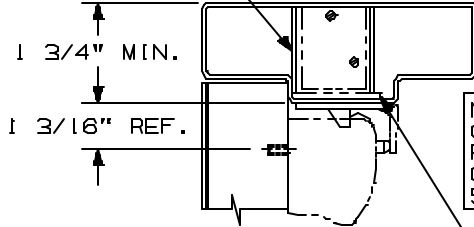


DEVICE INSTALLATION SCHEDULE	
VERT. ROD & MORT. DEVICE	2 3/4"
TWO VERT. ROD DEVICES	2 3/4"
SINGLE DOOR	2 3/4"
WHEN SURFACE APPLIED COORDINATOR IS USED, BACKSET OF VERTICAL ROD DEVICE MUST BE	2 3/4"

NOTE: MORTAR GUARD SHOULD BE PROVIDED TO PROTECT SOFFIT LATCH BOLT ASSEMBLY

LHR SHOWN
RHR OPPOSITE

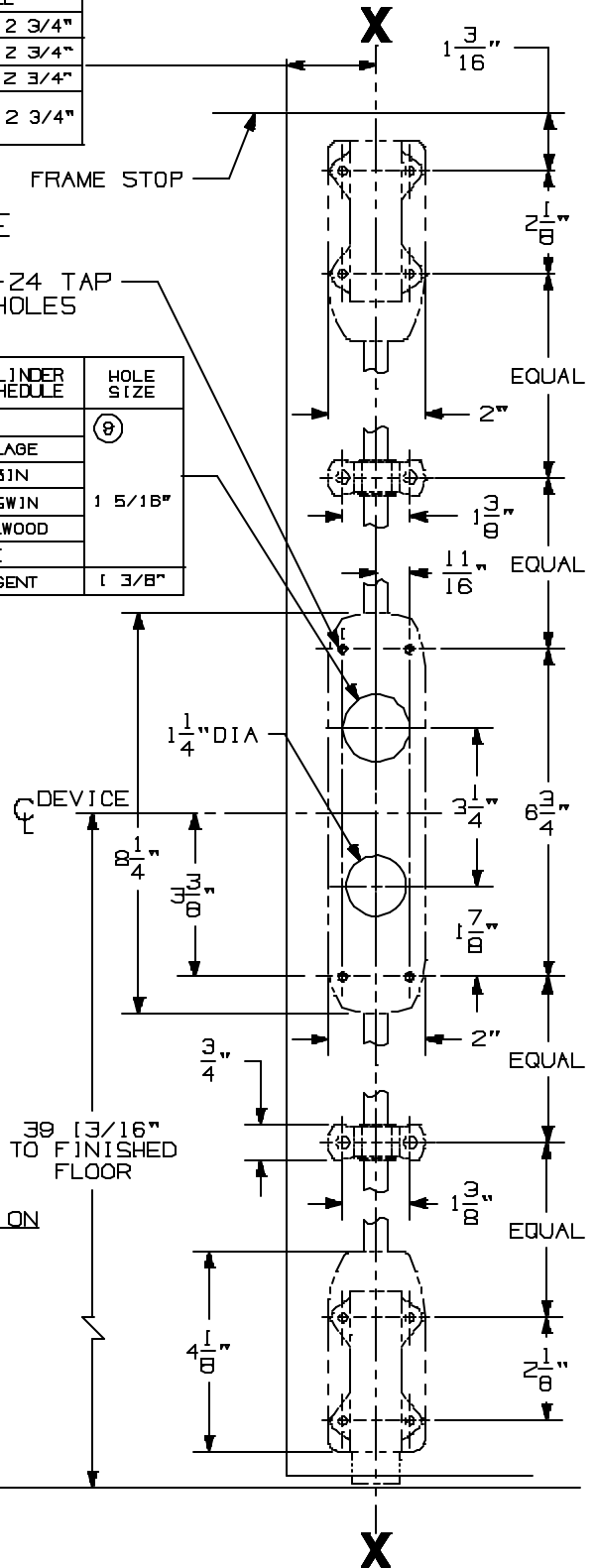
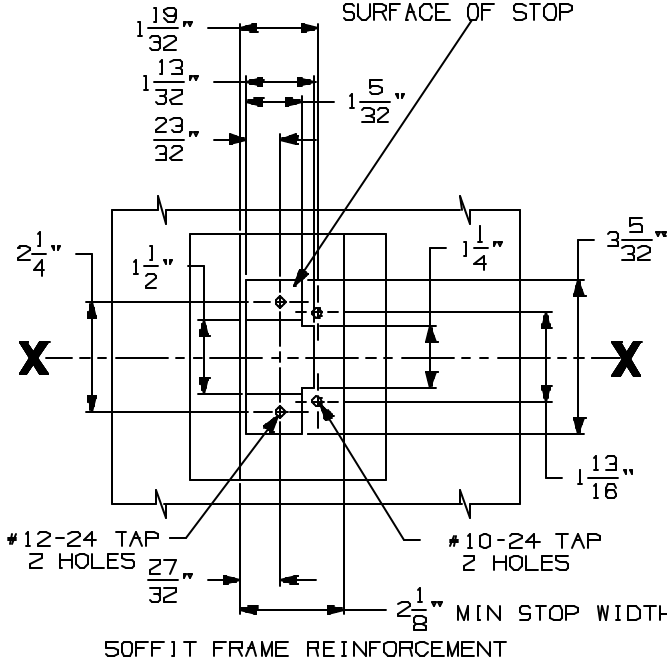


NOTE: OMIT CYLINDER PREPARATION IF CONTROL IS SPECIFIED

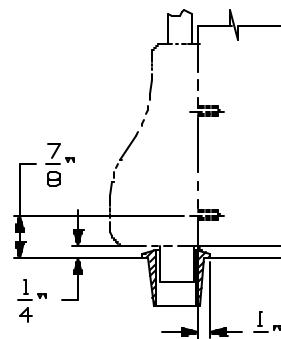
REINFORCING REQUIRED FOR SOFFIT LATCH MUST BE RECESSED 1/8" FROM TOP SURFACE OF STOP

#10-24 TAP
16 HOLES

CYLINDER SCHEDULE	HOLE SIZE
SCHLAGE	Ø
CORBIN	
RUSSWIN	1 5/16"
LOCKWOOD	
YALE	
SARGENT	1 3/8"



304L STRIKE APPLICATION



CROSSBAR 36 13/16" FROM FINISHED FLOOR

FOR OUTSIDE TRIM PREPARATION, SEE ADDITIONAL TRIM TEMPLATE.

INSIDE FACE OF LOCK STILE
LHR DOOR

8827K/L-F SURFACE APPLIED DEVICE



NOTE: SEE MASTER SHEET NO. 10001 FOR SUGGESTED REINFORCING

TEMPLATE NUMBER:

10166_9

DATE: 6-1-98