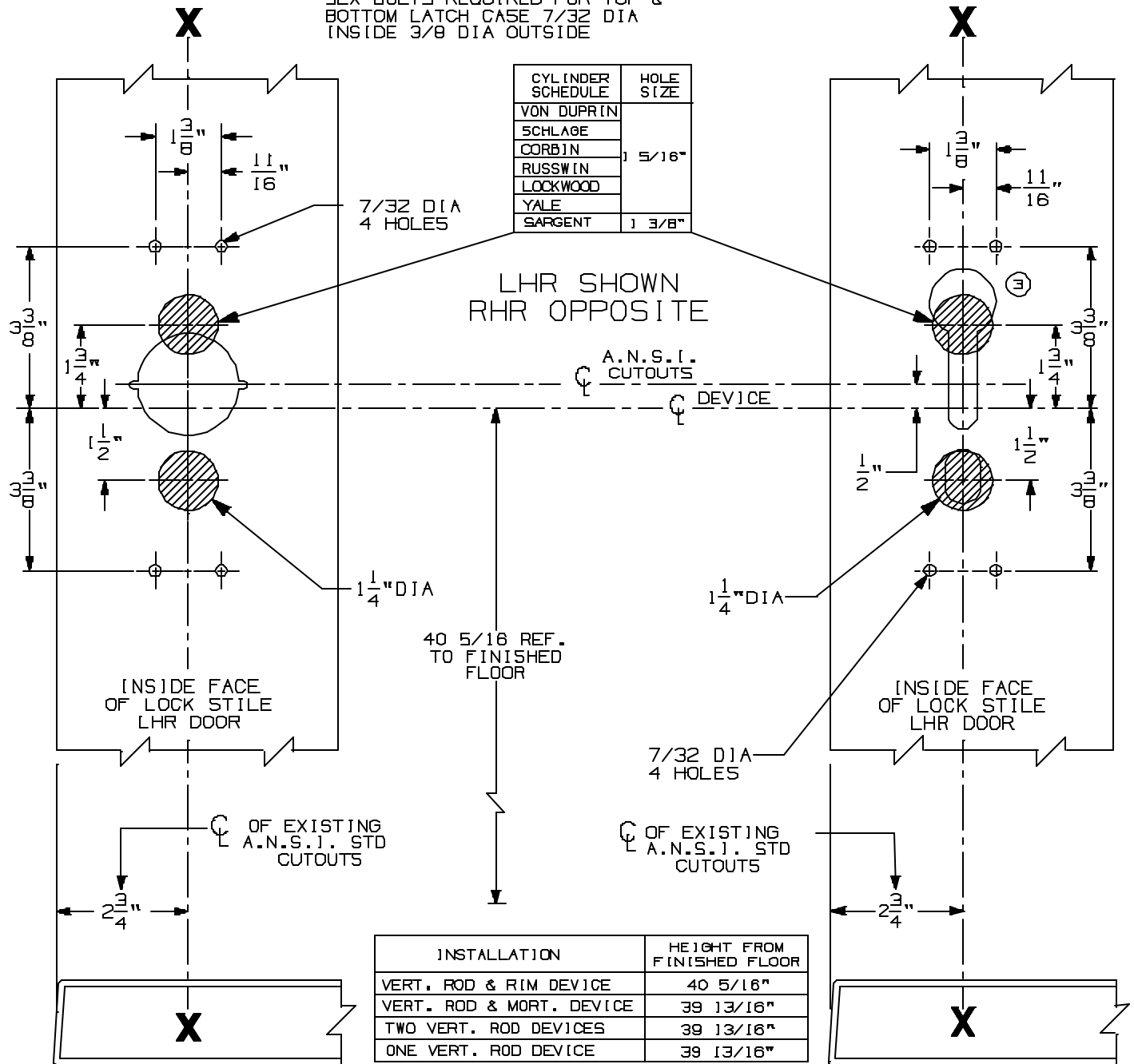


FOR ADDITIONAL INFORMATION SEE TEMPLATE NO. 10162

TYPE 161 STOCK HOLLOW METAL DOOR

TYPE 86 STOCK HOLLOW METAL DOOR & STD DOOR

NOTE: BACKSET IS ALWAYS 2 3/4".  
SEX BOLTS REQUIRED FOR TOP &  
BOTTOM LATCH CASE 7/32 DIA  
INSIDE 3/8 DIA OUTSIDE



VON DUPRIN CUTOUTS ARE LOCATED FROM A.N.S.I. CUTOUTS  
SEE A.N.S.I. SPECIFICATION NO. A115 FOR THE SIZE  
AND LOCATION OF THESE CUTOUTS.

FOR OUTSIDE TRIM PREPARATION,  
SEE ADDITIONAL TRIM TEMPLATE.

8827K VERTICAL ROD DEVICE WITH 880 TRIM  
FOR STOCK HOLLOW METAL APPLICATION



NOTE:

TEMPLATE NUMBER:

10201\_3

DATE:  
4-27-98