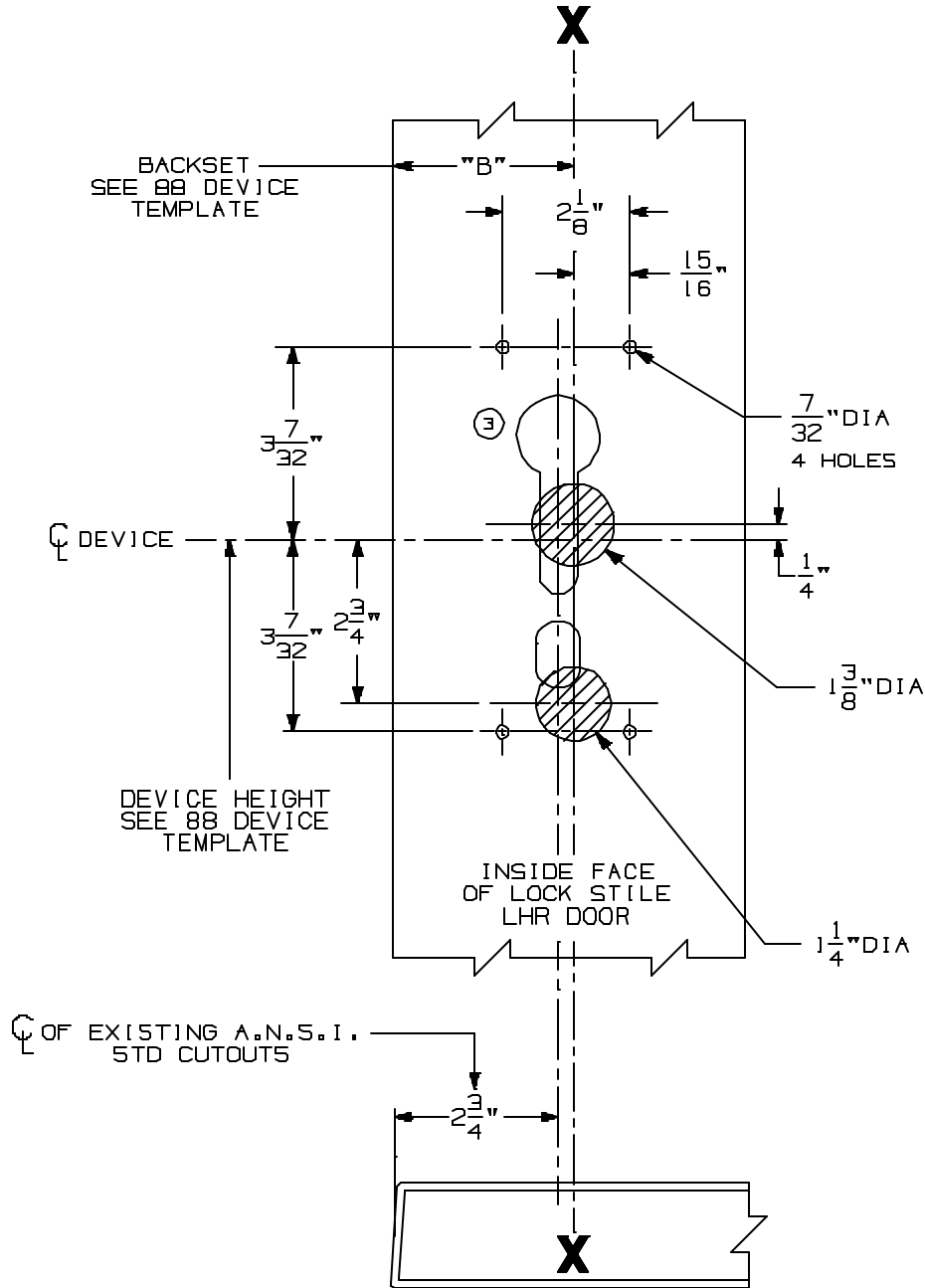


FOR ADDITIONAL INFORMATION SEE TEMPLATE NO. 10157 OR NO. 10171

NOTE: TYPE 86 STOCK HOLLOW METAL APPLICATIONS FOR 88 DEVICES WILL WORK WITH ALL STANDARD STRIKE APPLICATIONS. SEE CORRESPONDING 88 DEVICE TEMPLATE FOR CORRECT BACKSET AND DEVICE HEIGHT.

TYPE 86 STOCK HOLLOW METAL DOOR & STD DOOR



SEE A.N.S.I. SPECIFICATION NO. A115 FOR THE SIZE AND LOCATION OF STOCK CUTOUTS.

FOR OUTSIDE TRIM PREPARATION, SEE ADDITIONAL TRIM TEMPLATE.

LHR SHOWN
RHR OPPOSITE

88TP RIM DEVICES
WITH 880 TRIM FOR TYPE "86" STOCK
HOLLOW METAL APPLICATIONS

VON DUPRIN.

NOTE:

TEMPLATE NUMBER:

10204_3

DATE:

4-29-98