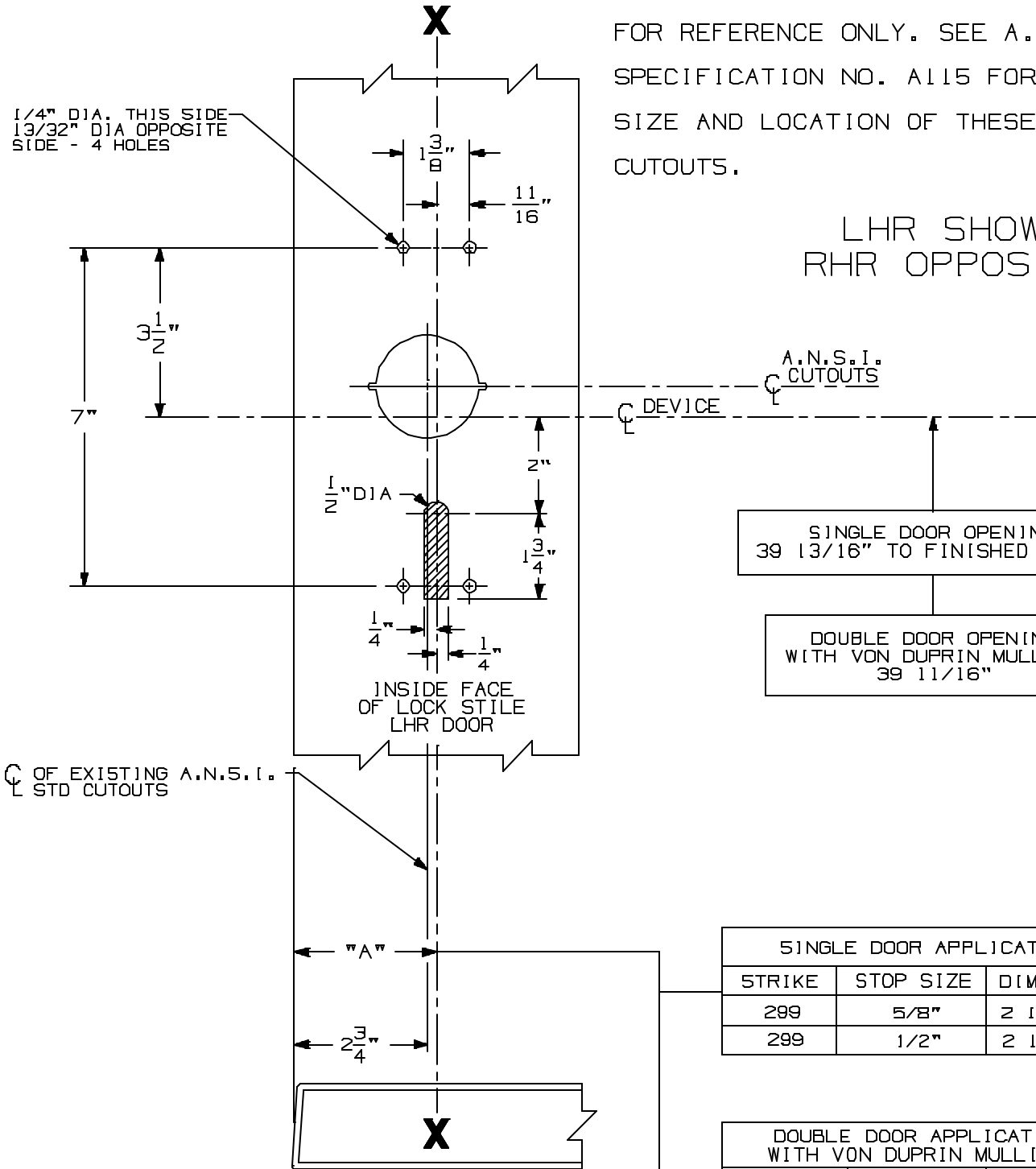


TYPE 161 STOCK HOLLOW METAL DOOR

A.N.S.I. CUTOUTS ARE SHOWN FOR REFERENCE ONLY. SEE A.N.S.I. SPECIFICATION NO. A115 FOR THE SIZE AND LOCATION OF THESE CUTOUTS.

LHR SHOWN
RHR OPPOSITE



SINGLE DOOR APPLICATION		
STRIKE	STOP SIZE	DIM. "A"
299	5/8"	2 15/16"
299	1/2"	2 13/16"

DOUBLE DOOR APPLICATION WITH VON DUPRIN MULLIONS		
MULLION	STRIKE	DIM. "A"
5654	299	2 7/8"
1654	1608	2 7/8"

FOR ADDITIONAL INFORMATION
SEE TEMPLATE NO. 10302

FOR OUTSIDE TRIM PREPARATION, WHEN REQUIRED,
SEE ADDITIONAL TRIM TEMPLATE.

98/99 TP, K & L RIM DEVICES
WITH 990, 991 & 992 TRIM FOR TYPE "161"
STOCK HOLLOW METAL APPLICATIONS



NOTE:

TEMPLATE NUMBER: 10309_5

DATE: 3-12-98