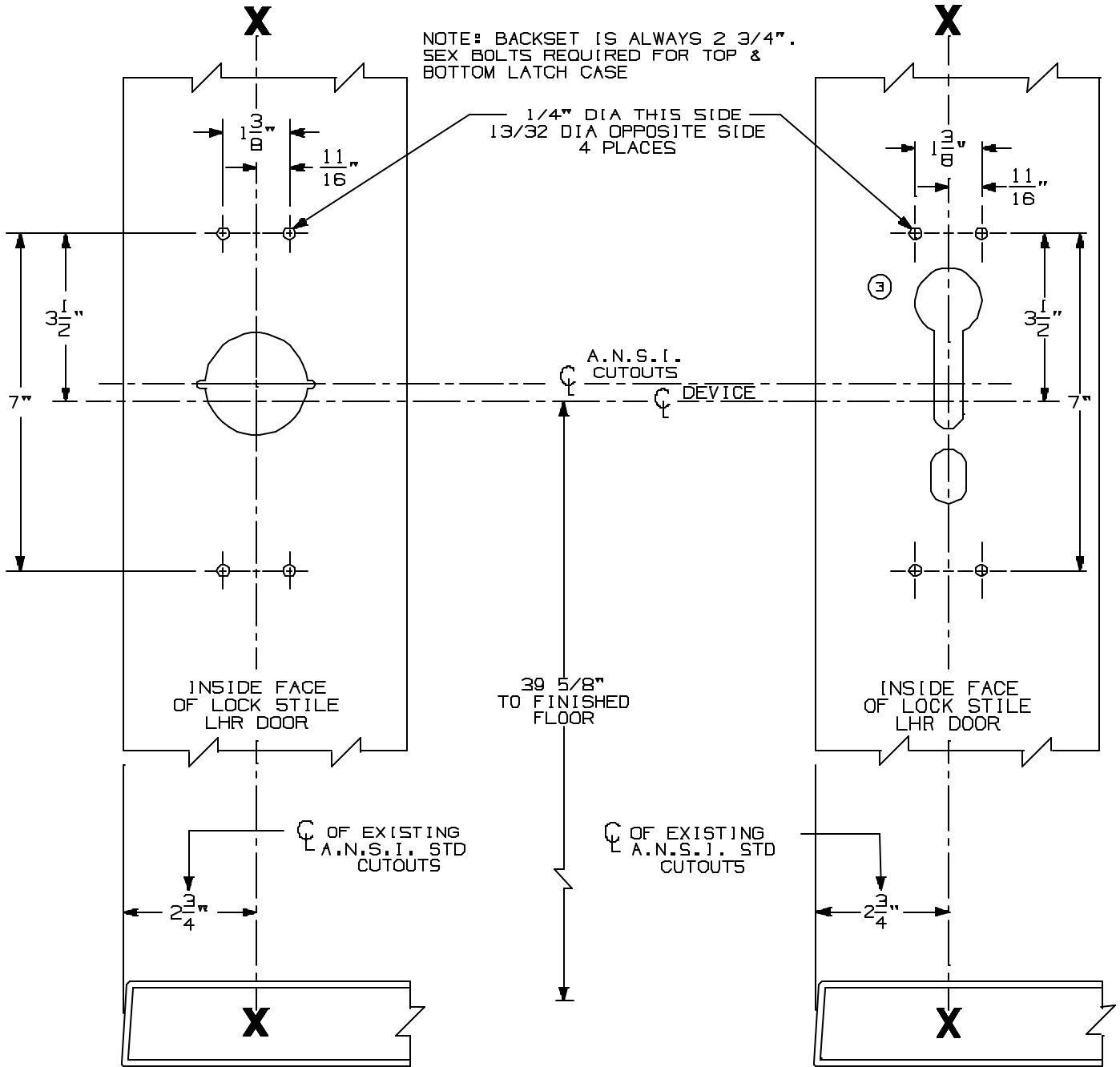


FOR ADDITIONAL INFORMATION SEE TEMPLATE NO. 10303

TYPE 161 STOCK HOLLOW METAL DOOR

TYPE 86 STOCK HOLLOW METAL DOOR



A.N.S.I. CUTOUTS ARE SHOWN FOR REFERENCE ONLY.
SEE A.N.S.I. SPECIFICATION NO. A115 FOR THE
SIZE AND LOCATION OF THESE CUTOUTS.

FOR OUTSIDE TRIM PREPARATION,
SEE ADDITIONAL TRIM TEMPLATE.

LHR SHOWN
RHR OPPOSITE

9827/9927 EO, DT & NL VERTICAL
ROD DEVICES WITH 990, 991/992-DT & RIGID TRIM
FOR STOCK HOLLOW METAL APPLICATIONS

VON DUPRIN.

NOTE:

TEMPLATE
NUMBER:

10310_3

DATE:
4-23-98