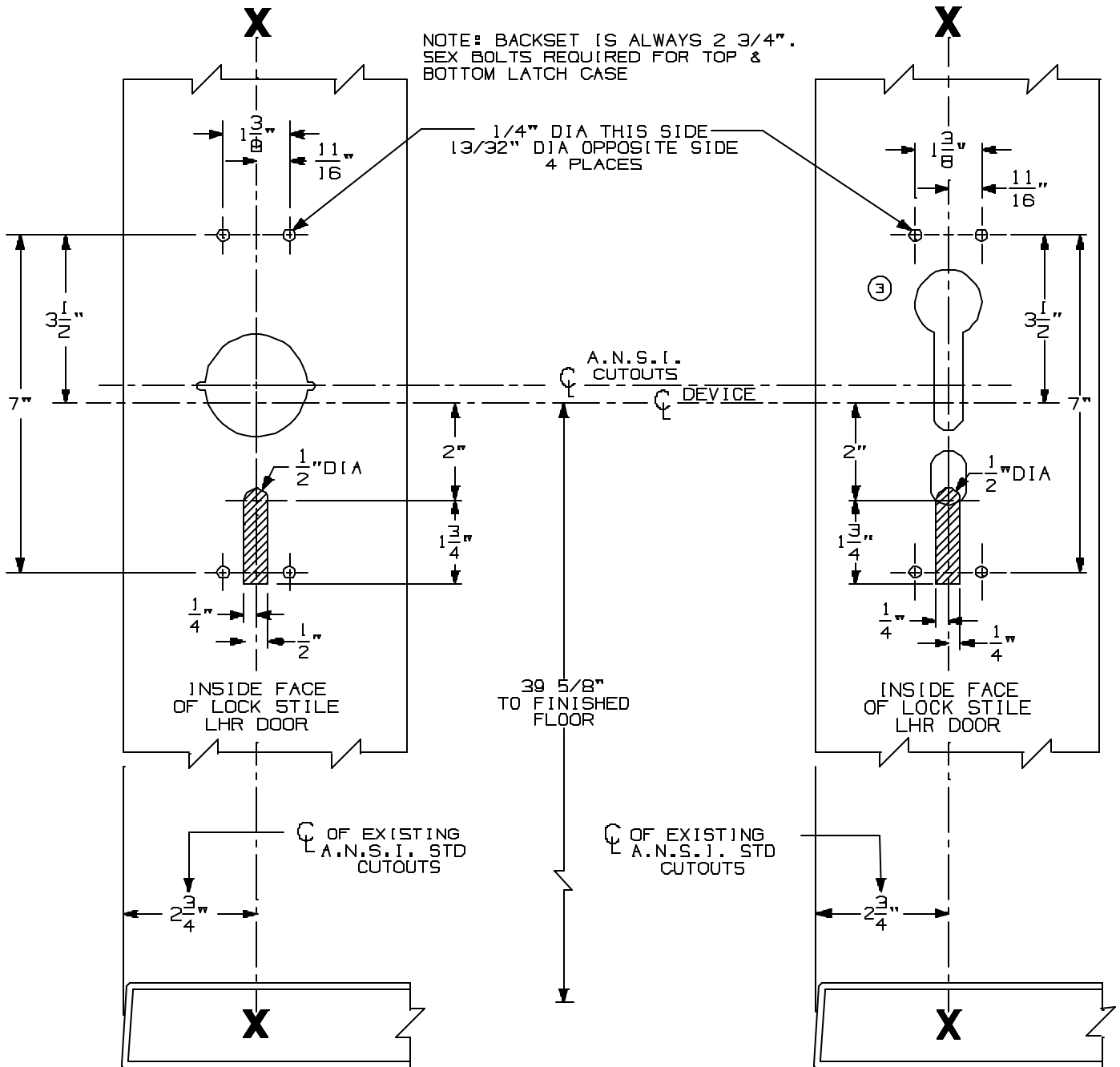


FOR ADDITIONAL INFORMATION SEE TEMPLATE NO. 10304

TYPE 161 STOCK HOLLOW METAL DOOR

TYPE 86 STOCK HOLLOW METAL DOOR



A.N.S.I. CUTOUTS ARE SHOWN FOR REFERENCE ONLY.  
SEE A.N.S.I. SPECIFICATION NO. A115 FOR THE  
SIZE AND LOCATION OF THESE CUTOUTS.

FOR OUTSIDE TRIM PREPARATION,  
SEE ADDITIONAL TRIM TEMPLATE.

LHR SHOWN  
RHR OPPOSITE

9827/9927 TP, K & L VERTICAL  
ROD DEVICES WITH 990, 991 & 992 TRIM  
FOR STOCK HOLLOW METAL APPLICATIONS



NOTE:

TEMPLATE  
NUMBER:

10311\_3

DATE:  
4-22-98