

NOTES: SEE MASTER SHEET NO. 10001 FOR SUGGESTED REINFORCING

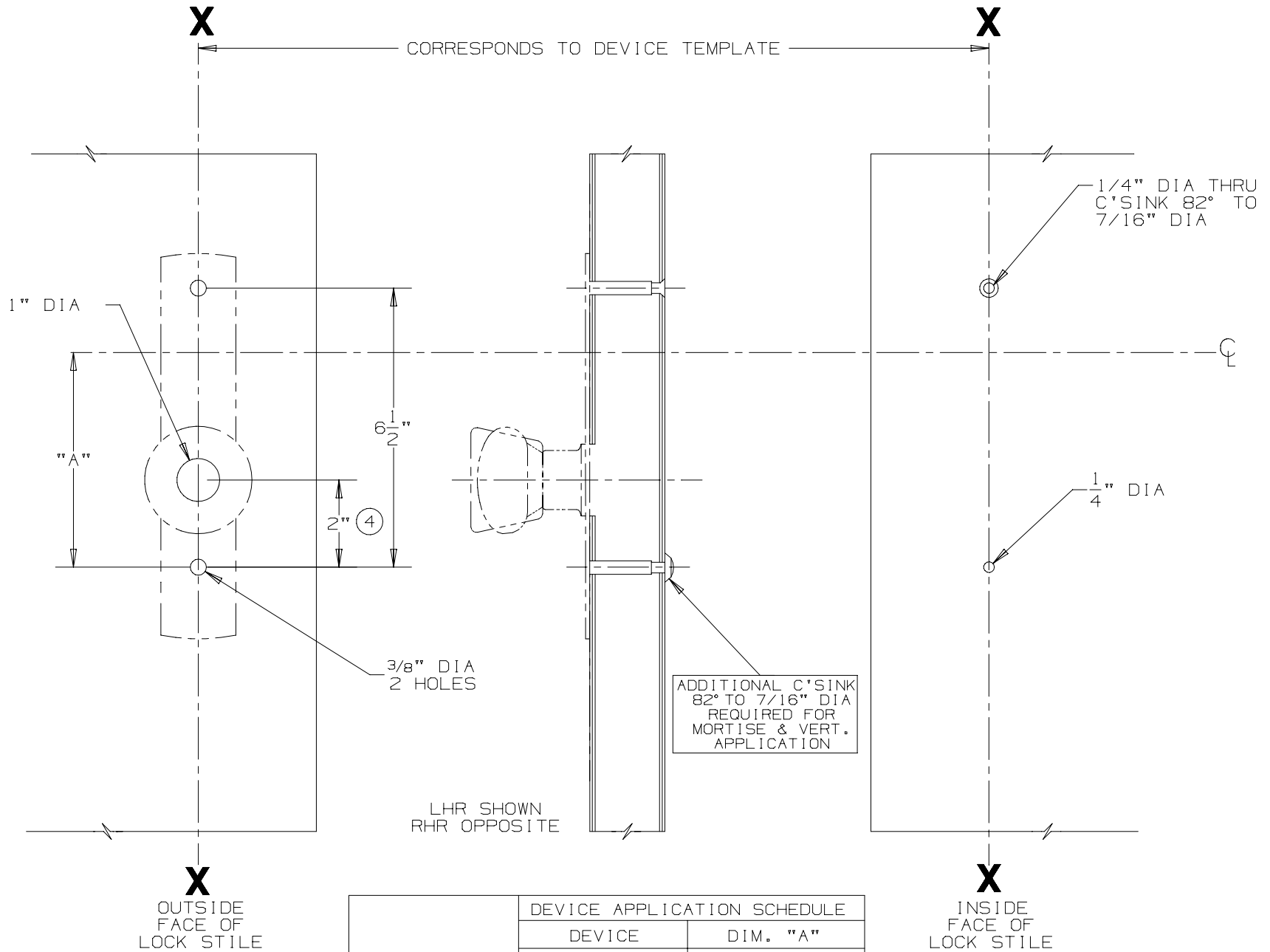
④ 606 K-DT TRIM FOR 44 RIM & 88 RIM, MORTISE & VERTICAL DEVICES

VON DUPPRIN

TEMPLATE NUMBER:

20059_4

DATE: 07-26-04



FOR CUTOUTS ON INSIDE FACE OF DOOR SEE DEVICE TEMPLATE	DEVICE APPLICATION SCHEDULE	
	DEVICE	DIM. "A"
	44 RIM	5"
	88 RIM	5"
	88 MORTISE	3 1/4"
	88 VERTICAL	3 1/4"

④