

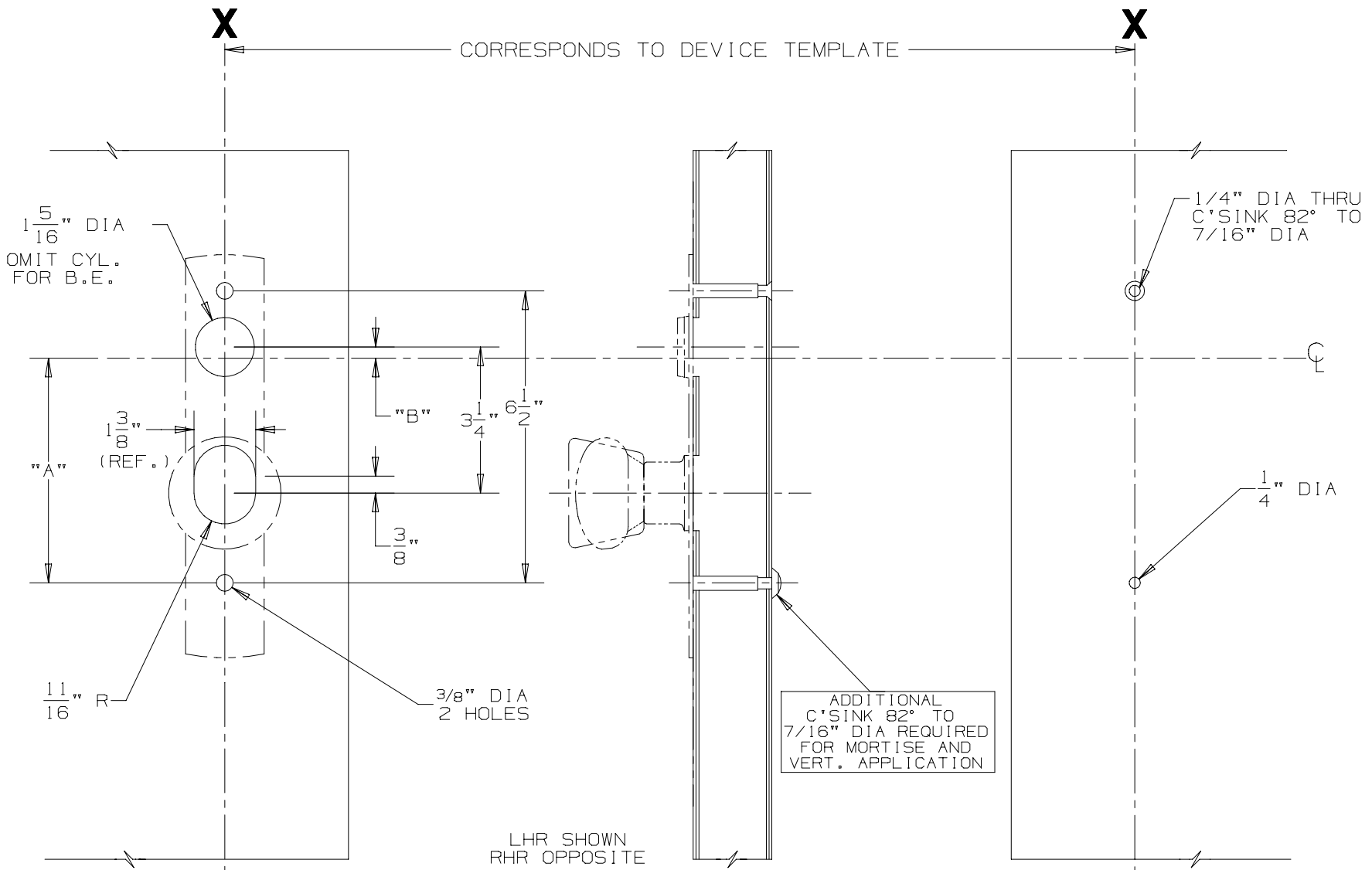
NOTES: SEE MASTER SHEET NO. 10001 FOR SUGGESTED REINFORCING

⑦ 606 K & 606 K-BE TRIM FOR 44 RIM & 88 RIM, MORTISE, VERTICAL DEVICES

TEMPLATE NUMBER: 20061-7



DATE: 07-26-04



**X**  
OUTSIDE  
FACE OF  
LOCK STILE

**X**  
INSIDE  
FACE OF  
LOCK STILE

FOR CUTOUTS ON INSIDE FACE OF DOOR SEE DEVICE TEMPLATE	DEVICE APPLICATION SCHEDULE		
	DEVICE	DIM. "A"	DIM. "B"
	44 RIM	5"	1/4"
	88 RIM	5"	1/4"
	88 MORT.	3 1/4"	2"
	8827	3 1/4"	1 3/4"