

NOTES: SEE MASTER SHEET NO. 10001 FOR SUGGESTED REINFORCING

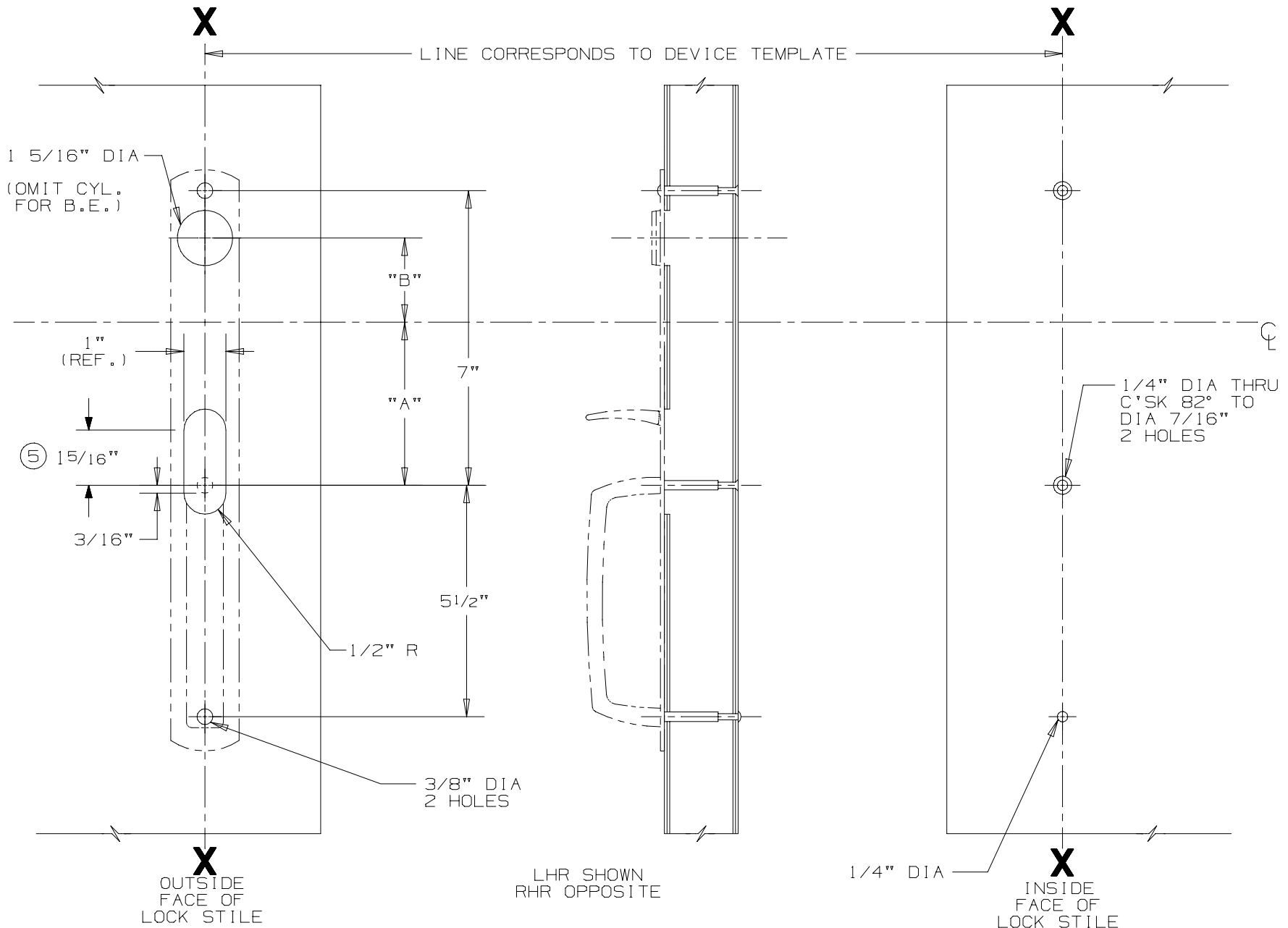
608TP & 608TP-BE TRIM

VON DUPRIN

TEMPLATE NUMBER:

20069_5

DATE: 07-26-04



DEVICE APPLICATION SCHEDULE

DEVICE	DIM "A"	DIM "B"
44 RIM	3 7/8"	1/4"
88 RIM	3 7/8"	1/4"
88 MORT.	3 3/4"	2"
8827	3 7/8"	1 3/4"

FOR CUTOUTS ON INSIDE FACE OF DOOR SEE DEVICE TEMPLATE

IT IS RECOMMENDED THE MOUNTING HOLES BE PREPARED IN THE FIELD