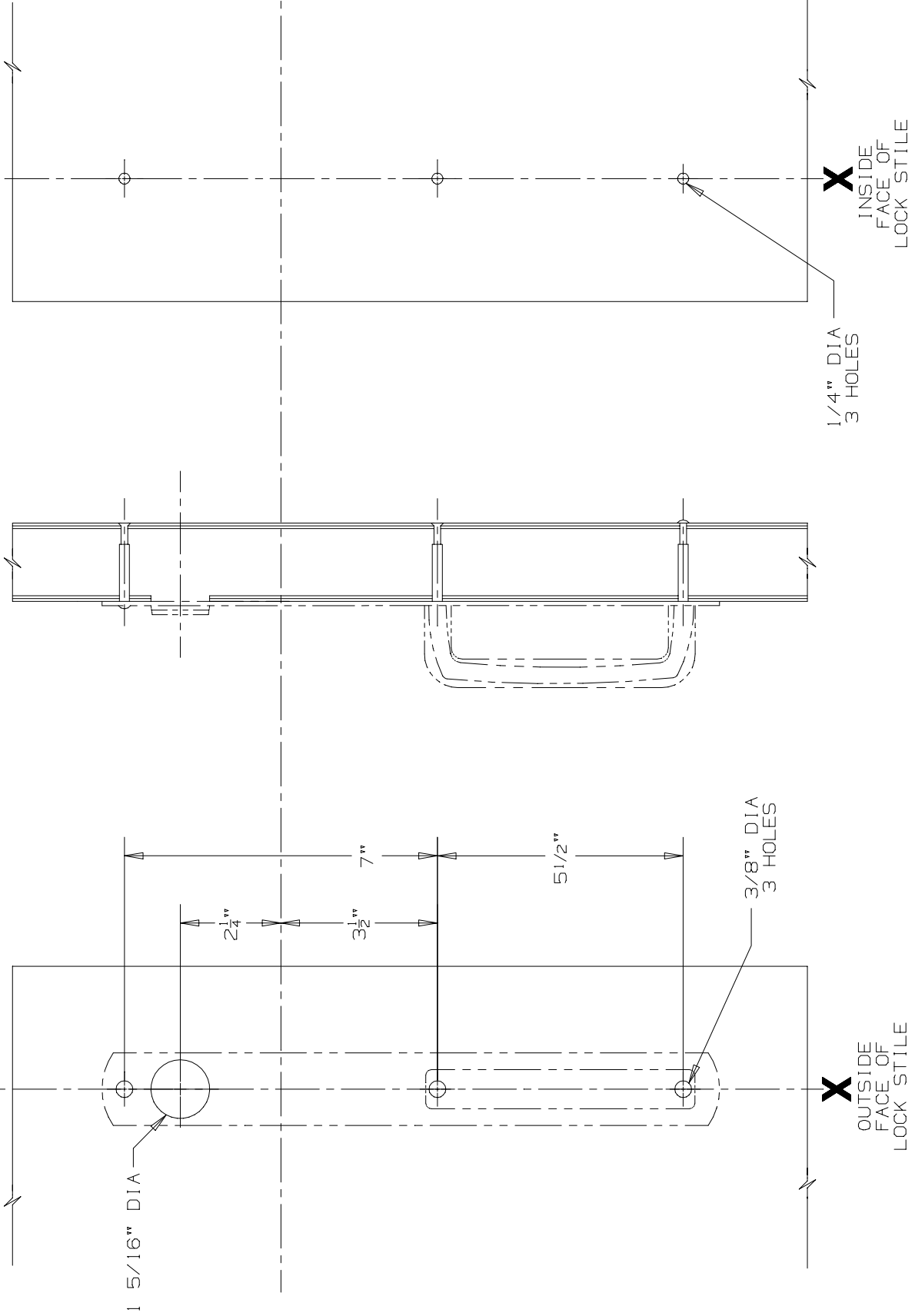


X

LINE CORRESPONDS TO DEVICE TEMPLATE



X
INSIDE
FACE OF
LOCK STILE

1/4\" DIA
3 HOLES

X

X
OUTSIDE
FACE OF
LOCK STILE

1 5/16\" DIA

2 1/4\"

3 1/2\"

7\"

5 1/2\"

3/8\" DIA
3 HOLES

LHR SHOWN
RHR OPPOSITE

DEVICE APPLICATION SCHEDULE
9875/9975 MORTISE
9875-F/9975-F MORTISE

696NL & 697NL TRIM



NOTES: SEE MASTER SHEET NO. 10001 FOR SUGGESTED REINFORCING

TEMPLATE NUMBER: 20104_3

DATE: 8-18-98