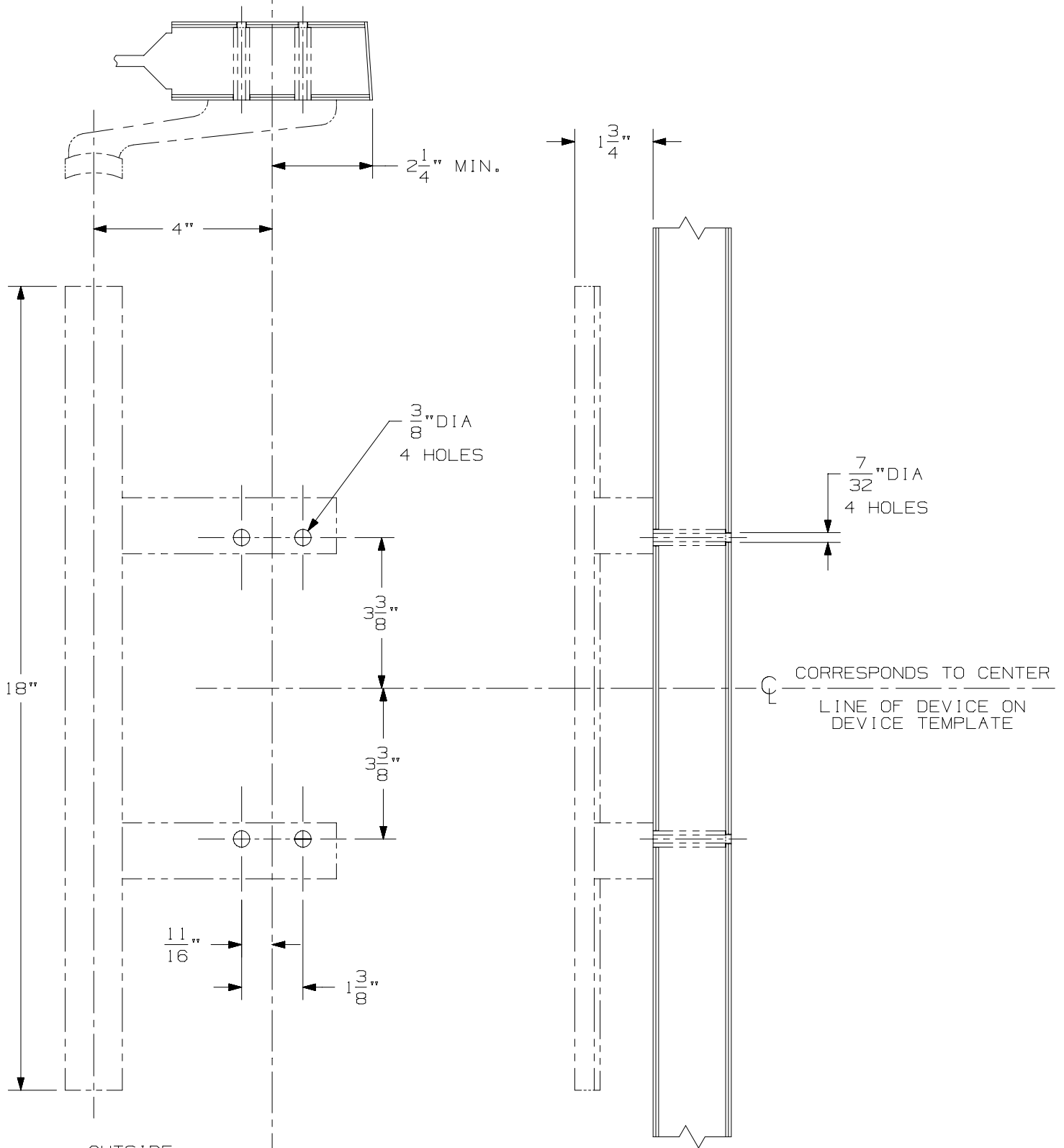


LINE X-X CORRESPONDS TO
LINE X-X ON DEVICE TEMPLATE

X



OUTSIDE
FACE OF
LOCK STILE

X

LHR SHOWN
RHR OPPOSITE

01 MOD, 01DT MOD TRIM
FOR 8827 & 8847

IR VON DUPRIN®

②

NOTE: SEE MASTER SHEET NO. 10001 FOR SUGGESTED REINFORCING.

TEMPLATE
NUMBER:

20436_2

DATE:
7/16/98