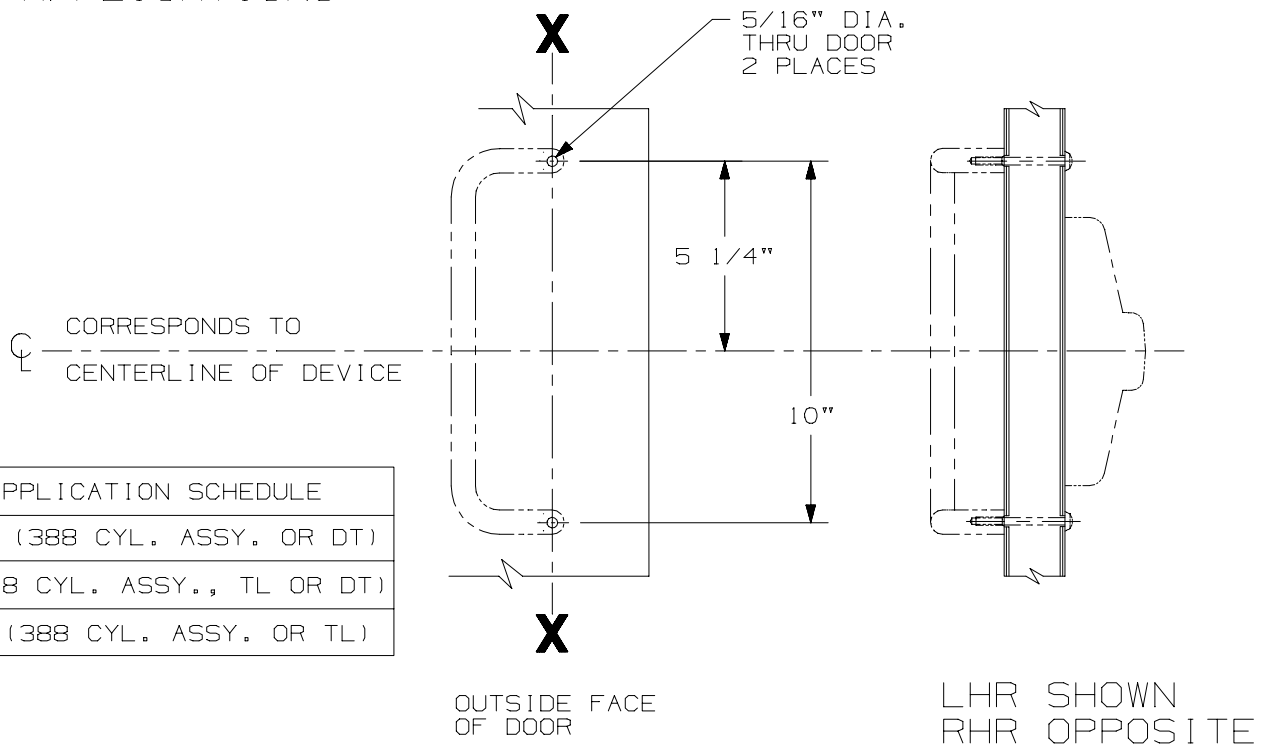


IVES 8190-0 PULL

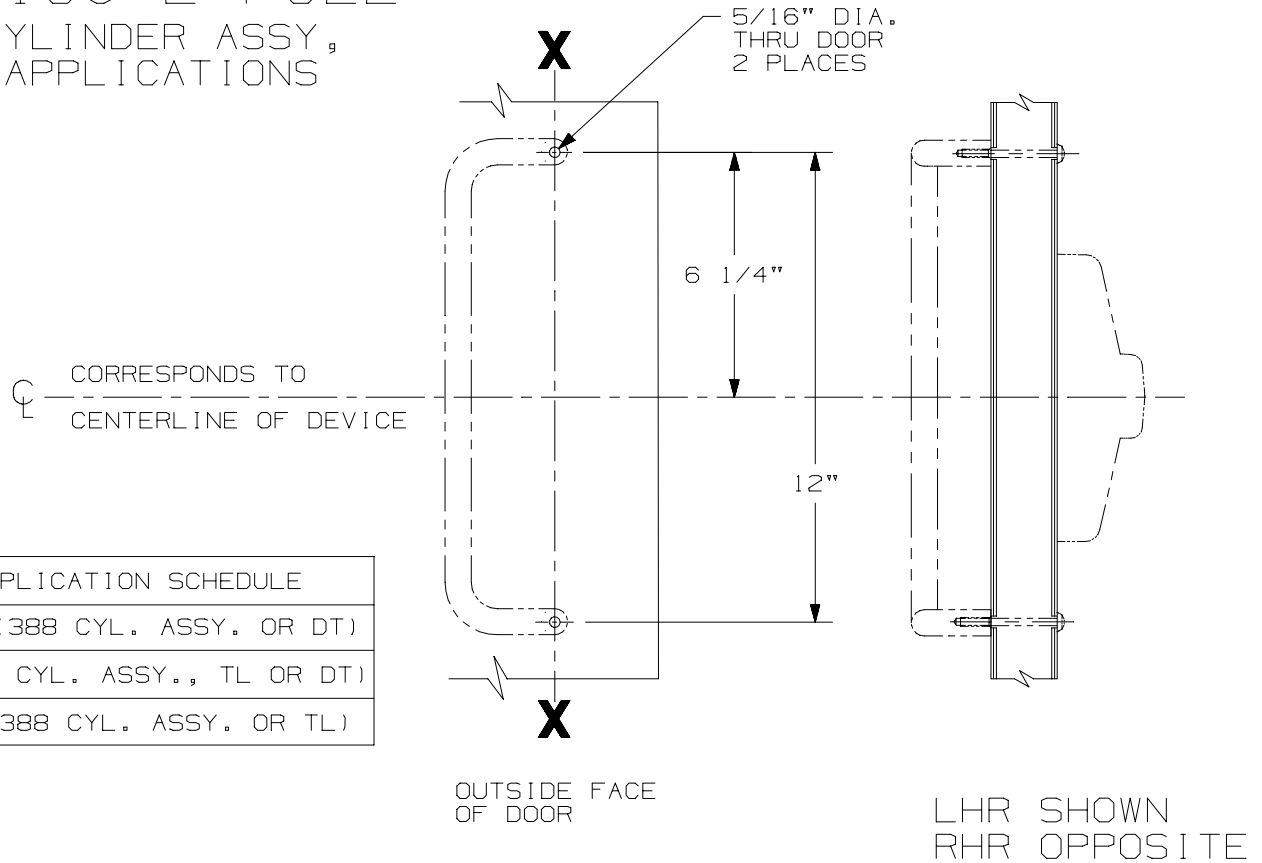
FOR 388 CYLINDER ASSY,
TL OR DT APPLICATIONS



DEVICE APPLICATION SCHEDULE
33A/35A RIM (388 CYL. ASSY. OR DT)
33/3527A (388 CYL. ASSY., TL OR DT)
33/3527A-F (388 CYL. ASSY. OR TL)

IVES 8190-2 PULL

FOR 388 CYLINDER ASSY,
TL OR DT APPLICATIONS



DEVICE APPLICATION SCHEDULE
33A/35A RIM (388 CYL. ASSY. OR DT)
33/3527A (388 CYL. ASSY., TL OR DT)
33/3527A-F (388 CYL. ASSY. OR TL)

IVES 8190-0 & 8190-2 PULL



NOTE: SEE MASTER SHEET NO. 10001 FOR SUGGESTED REINFORCING.

TEMPLATE
NUMBER:

20455_0

DATE:
06-26-03