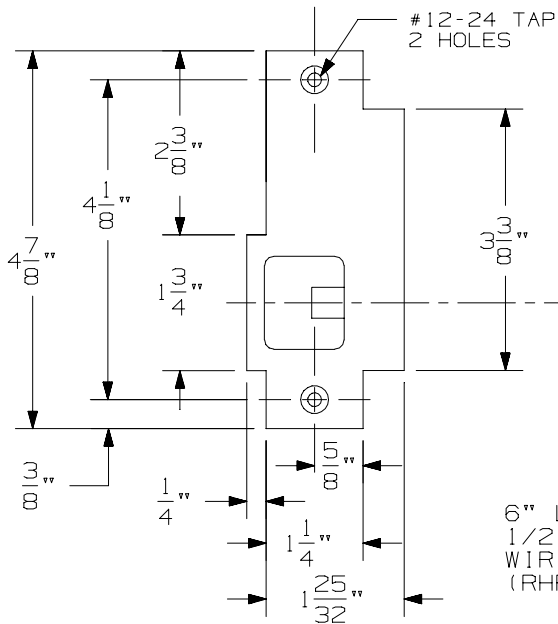
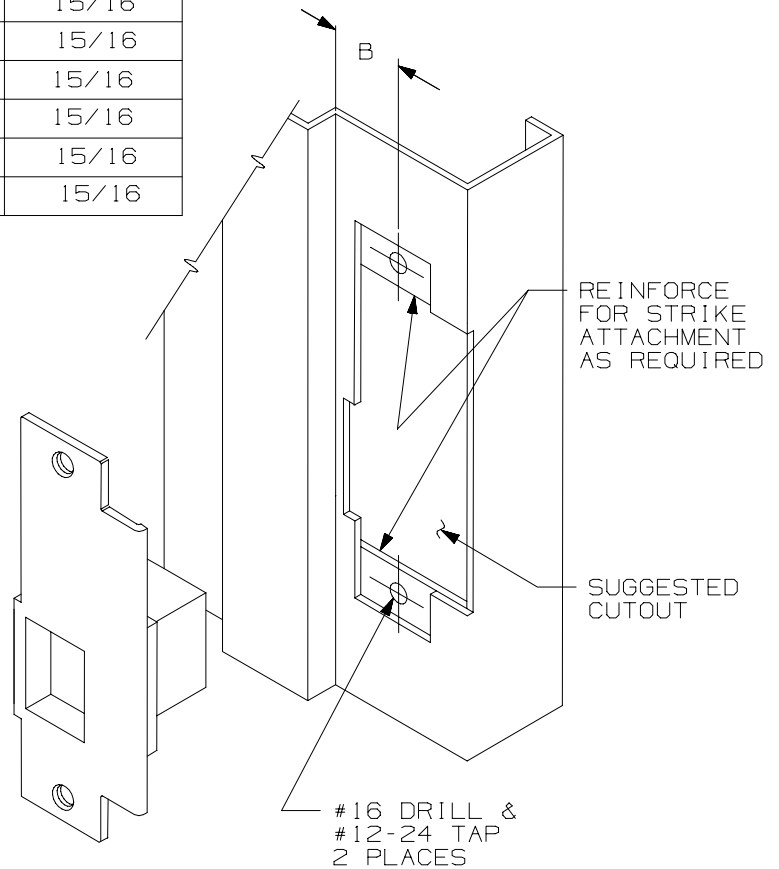
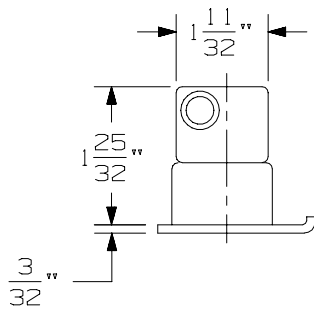


4582 MORTISE LOCK APPLICATION SCHEDULE T-2 TRIPPER

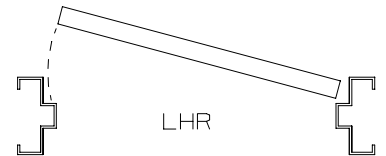
MANUFACTURER	MODEL	THROW (IN.)	DIM "B" (IN.)
BLADWIN	6000	5/8	15/16
BEST	24H/25H/34H/35H	3/4	15/16
CORBIN	9500	3/4	15/16
RUSSWIN	5000	3/4	15/16
SARGENT	900	3/4	15/16
SARGENT	7700/8100	3/4	15/16
SCHLAGE	L9000	3/4	15/16



LATCH BOLT & STRIKE CAVITY

6" LONG LEAD WIRES 1/2 DIA. MIN. WIRING ACCESS (RHR ONLY)

6" LONG LEAD WIRES 1/2 DIA. MIN. WIRING ACCESS (LHR ONLY)



LHR SHOWN, RHR OPPOSITE

NOTE: THIS TEMPLATE IS TO BE USED FOR MORTISE LOCKS WITH THE AUXILIARY BOLT LOCATED ABOVE THE LATCH BOLT.

4582 MONITOR STRIKE METAL FRAME APPLICATION



NOTE: SEE MASTER SHEET NO. 10001 FOR SUGGESTED REINFORCING.

TEMPLATE NUMBER: 30203_6

DATE: 7-8-98