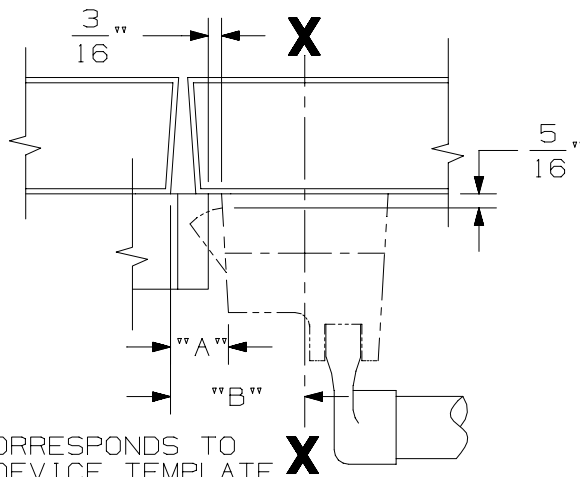




# 6121 ELECTRIC STRIKE DOUBLE DOOR APPLICATION RIM APPLICATION SCHEDULE

PRODUCT MANUFACTURER	PRODUCT APPLICATION	DIM "A"	DIM "B"
VON DUPRIN	22 RIM		2 7/16"
VON DUPRIN	33/35 RIM E0/DT/NL/TP		1 13/32"
VON DUPRIN	44 RIM E0/DT/NL/TP		2 1/2"
VON DUPRIN	44 RIM K		3 3/8"
VON DUPRIN	88 RIM E0/DT/NL/TP		2 1/2"
VON DUPRIN	88 RIM K		2 3/8"
VON DUPRIN	98/99 RIM		2 7/16"
CORBIN	29/39/49 RIM	1"	
MAGNOCHROM	RIM	1 1/16"	
MONARCH	11-R RIM	1"	
MONARCH	XX-R RIM	1 1/16"	
*MONARCH	18-R/F-18-R	1"	
*MONARCH	19-R/F-19-R	1"	
PRECISION	1100 RIM	1"	
PRECISION	810 RIM	1"	
RUSSWIN	372/472/572 RIM	1"	
SARGENT	2800/6500/9898	1 1/16"	
**SARGENT	9800 RIM	1 1/16"	
SARGENT	9500 RIM	1"	
SARGENT	6800/8500/8800 RIM	1 1/16"	
YALE	1500 RIM	1"	
YALE	7000/7100/7200 RIM	1 1/16"	

⑥



LINE X-X CORRESPONDS TO LINE X-X ON DEVICE TEMPLATE

- NOTES:  
 1. \*NO DEADLATCHING.  
 2. \*\*PANIC DEVICES ONLY.

6121 ELECTRIC STRIKE  
DOUBLE DOOR APPLICATION



NOTE: SEE MASTER SHEET NO. 10001 FOR SUGGESTED REINFORCING

TEMPLATE NUMBER: 30239\_6SHT2

DATE: 02-21-00