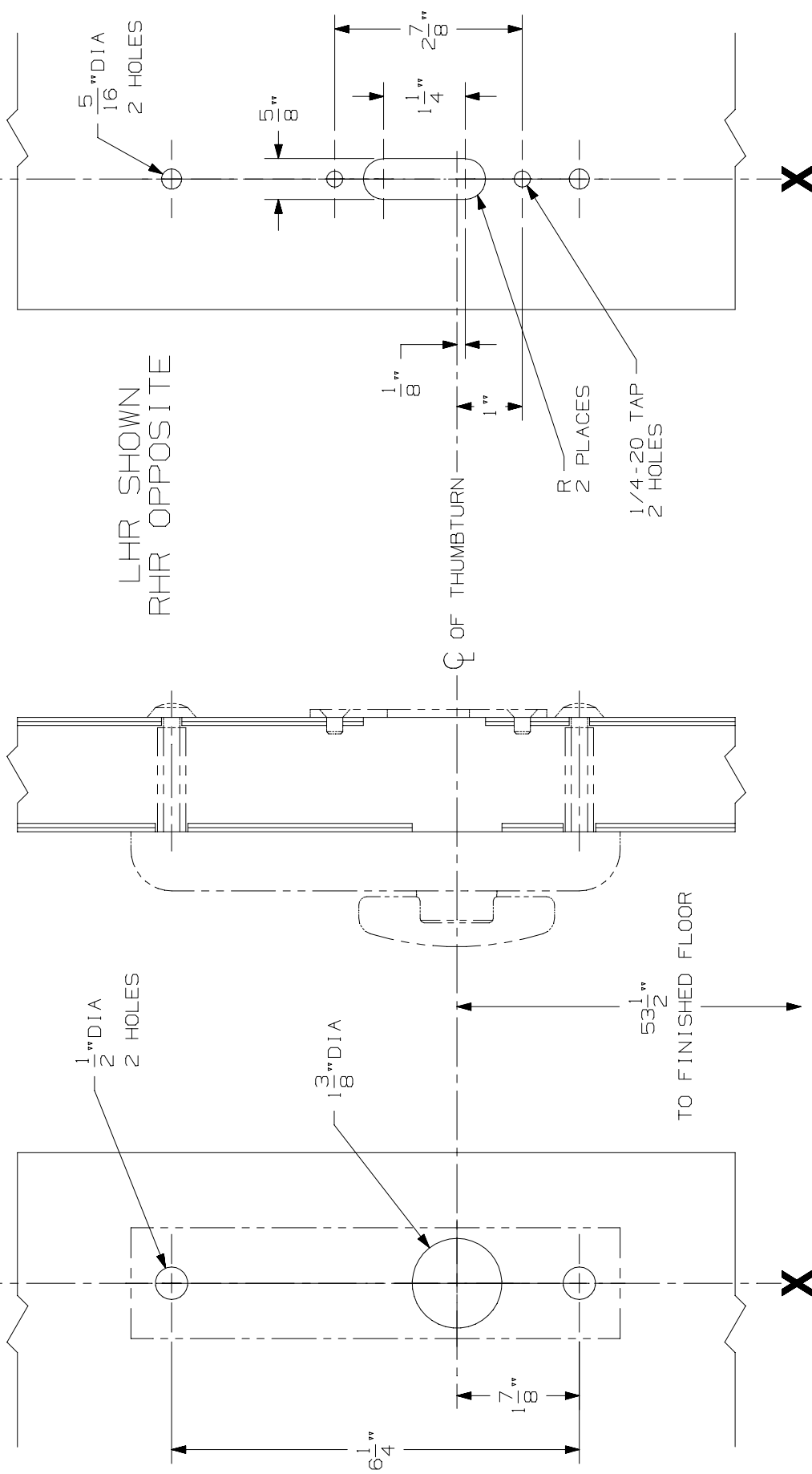


LINE X-X CORRESPONDS TO
LINE X-X ON DEVICE TEMPLATE

X



1/2" DIA
2 HOLES

X

X

②

DEVICE APPLICATION SCHEDULE
8827-F VERT. ROD DEVICE
8827 VERT. ROD DEVICE

OUTSIDE
FACE OF
LOCK STILE

377-T-BE CONTROL

IR VON DUPRIN®

②

NOTES: SEE MASTER SHEET NO. 10001 FOR SUGGESTED REINFORCING.

TEMPLATE NUMBER: 40117_2

DATE: 2-26-98