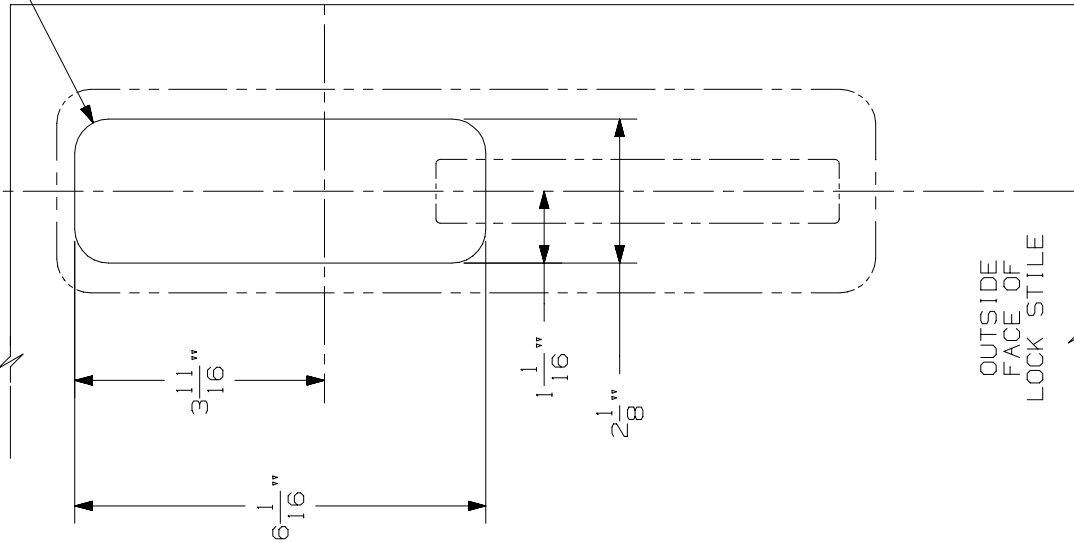


LINE X-X CORRESPONDS TO
LINE X-X ON DEVICE TEMPLATE

$\frac{1}{2}$ " R
4 PLACES

X



OUTSIDE
FACE OF
LOCK STILE

X

LHR SHOWN
RHR OPPOSITE

CORRESPONDS TO CENTER
LINE OF DEVICE ON
DEVICE TEMPLATE

$1\frac{5}{16}$ "

NOTE: MOUNTING HOLES TO BE PREPARED
AT INSTALLATION ON DOOR.

FOR CUTOUTS ON INSIDE FACE OF DOOR
SEE DEVICE TEMPLATE.

VON DUPRIN

230TP & 230TP-BE TRIM
(WOOD DOOR)

INGERSOLL-RAND
ARCHITECTURAL HARDWARE

Ⓢ

NOTES:

TEMPLATE
NUMBER:

W20038_1

DATE:

10-12-98