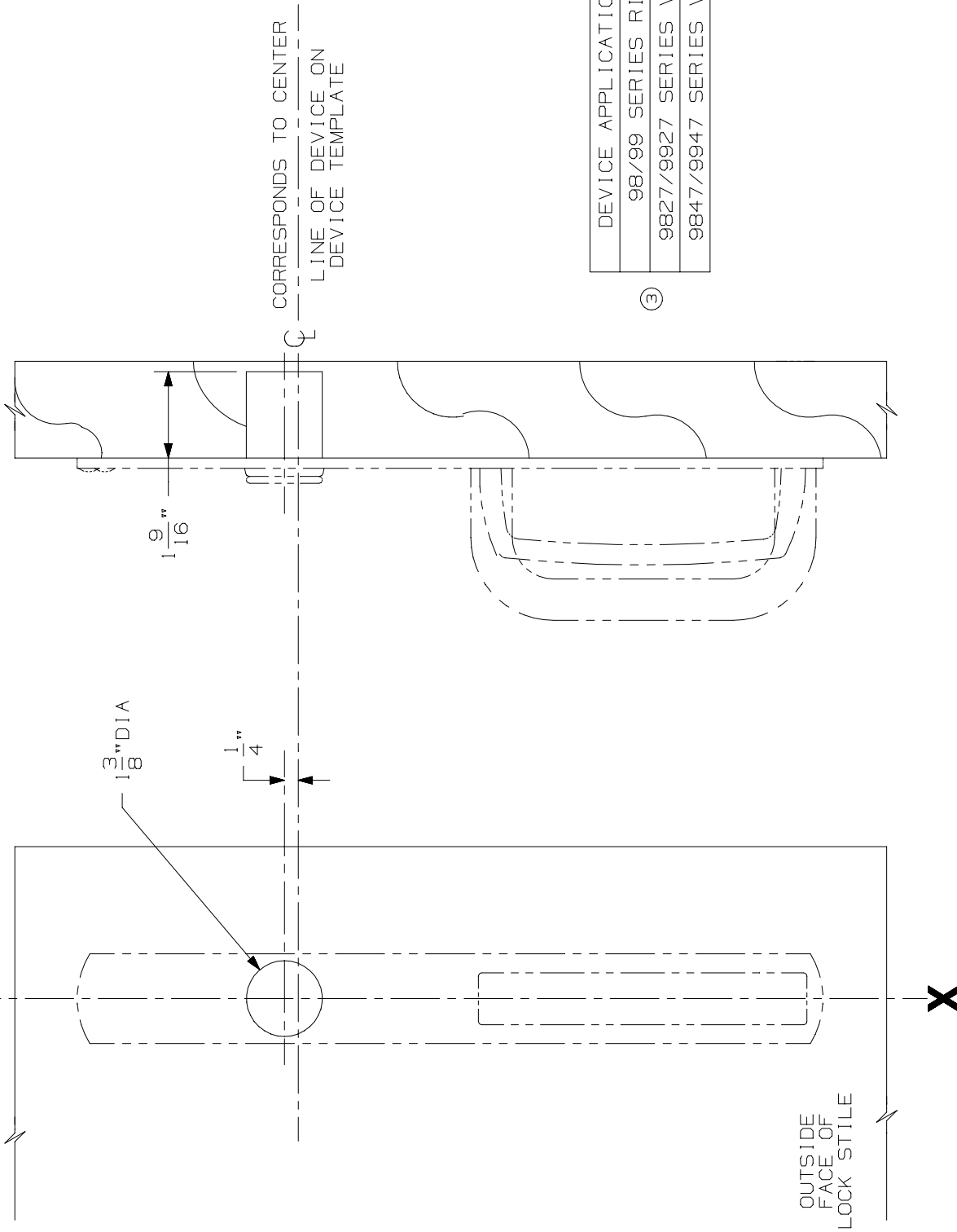


LINE X-X CORRESPONDS TO
LINE X-X ON DEVICE TEMPLATE



LHR SHOWN
RHR OPPOSITE

DEVICE APPLICATION SCHEDULE
98/99 SERIES R1M DEVICE
9827/9927 SERIES VERT. DEVICE
9847/9947 SERIES VERT. DEVICE

③

FOR CUTOUTS ON INSIDE FACE OF DOOR
SEE DEVICE TEMPLATE.

NOTE: MOUNTING HOLES TO BE PREPARED
AT INSTALLATION ON DOOR.

696NL & 697NL TRIM
(WOOD DOOR)

③

IR VON DUPRIN®

③

NOTES:

TEMPLATE
NUMBER:

W20102_3

DATE:

10-14-98