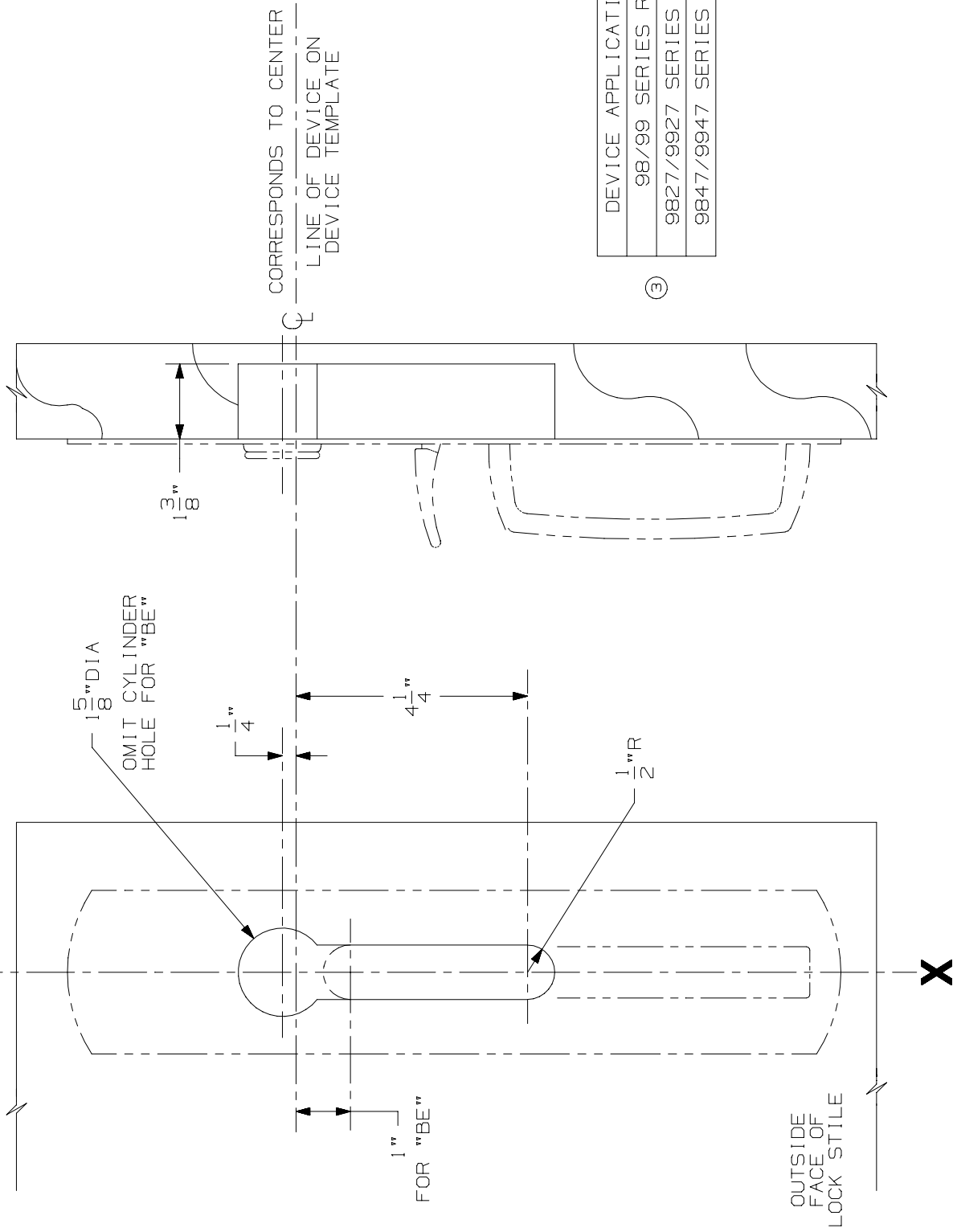


LINE X-X CORRESPONDS TO  
LINE X-X ON DEVICE TEMPLATE



DEVICE APPLICATION SCHEDULE
98/99 SERIES RIM DEVICE
9827/9927 SERIES VERT. DEVICE
9847/9947 SERIES VERT. DEVICE

③

LHR SHOWN  
RHR OPPOSITE

NOTE: MOUNTING HOLES TO BE PREPARED AT INSTALLATION ON DOOR.

FOR CUTOUTS ON INSIDE FACE OF DOOR SEE DEVICE TEMPLATE.

990TP & 990TP-BE TRIM (WOOD DOOR)



③

NOTES:

TEMPLATE NUMBER:

W20265\_3

DATE:

10-15-98