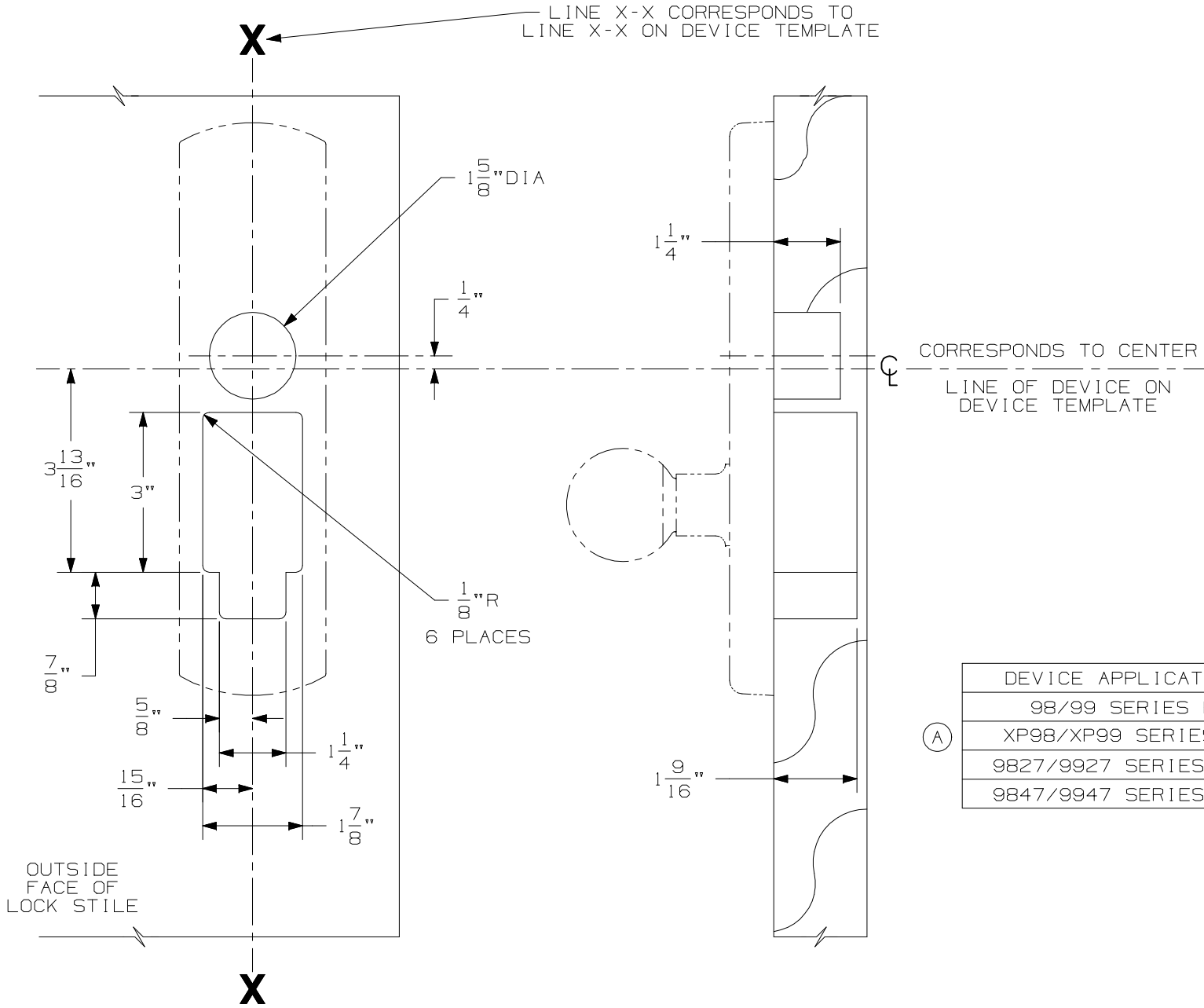


NOTES:

991K & 992L TRIM (WOOD DOOR)



DEVICE APPLICATION SCHEDULE
98/99 SERIES RIM DEVICE
XP98/XP99 SERIES RIM SEVICE
9827/9927 SERIES VERT. DEVICE
9847/9947 SERIES VERT. DEVICE

(A)

LHR SHOWN
RHR OPPOSITE

NOTE: MOUNTING HOLES TO BE PREPARED AT INSTALLATION ON DOOR.

FOR CUTOUTS ON INSIDE FACE OF DOOR SEE DEVICE TEMPLATE.

TEMPLATE NUMBER:

W20272_A

DATE: 04-28-08

