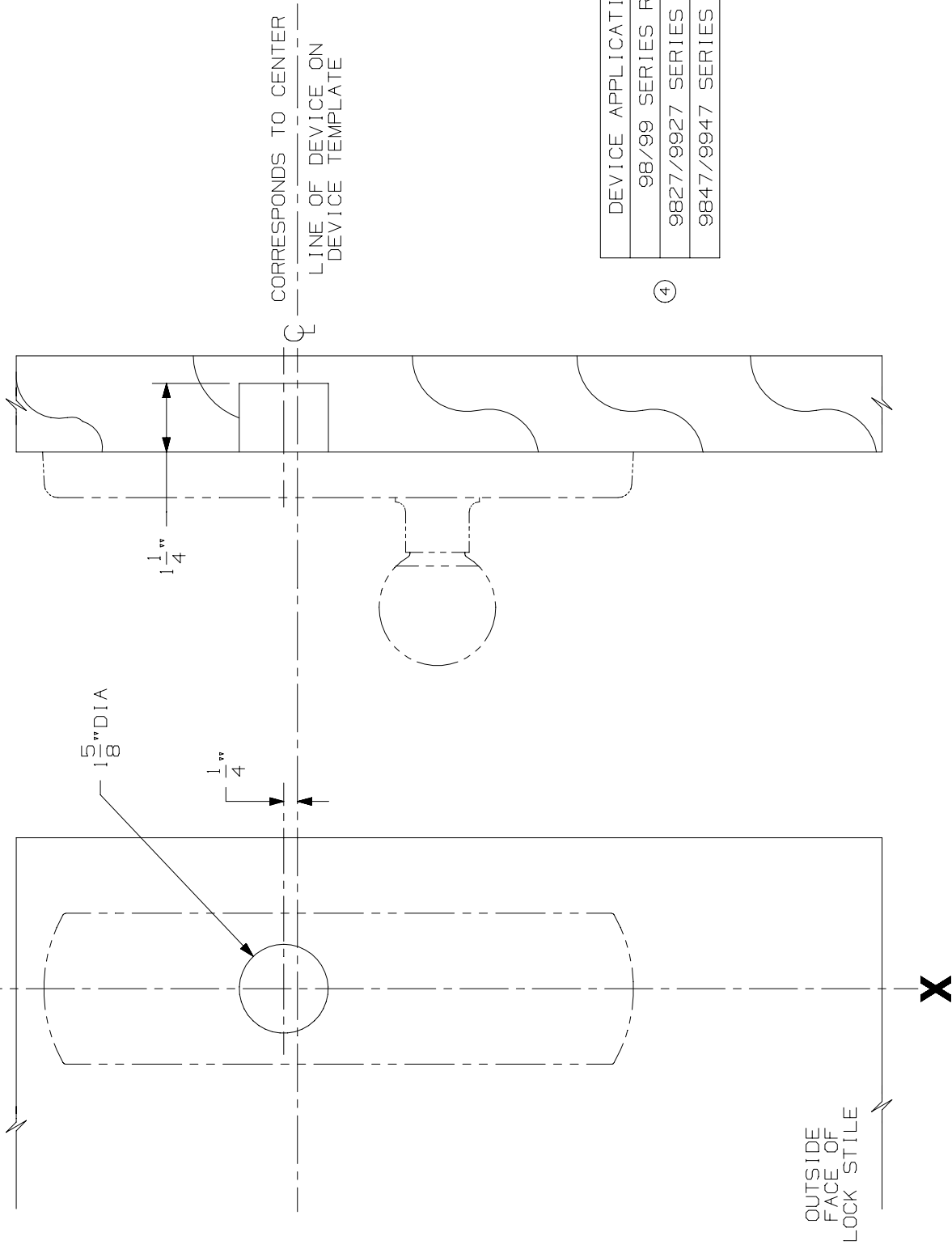


LINE X-X CORRESPONDS TO
LINE X-X ON DEVICE TEMPLATE



CORRESPONDS TO CENTER
LINE OF DEVICE ON
DEVICE TEMPLATE

DEVICE APPLICATION SCHEDULE
98/99 SERIES RIM DEVICE
9827/9927 SERIES VERT. DEVICE
9847/9947 SERIES VERT. DEVICE

④

LHR SHOWN
RHR OPPOSITE

NOTE: MOUNTING HOLES TO BE PREPARED
AT INSTALLATION ON DOOR.

FOR CUTOUTS ON INSIDE FACE OF DOOR
SEE DEVICE TEMPLATE.

991KR & 992LR TRIM (WOOD DOOR)
(RIGID)

IR VON DUPRIN®

④

NOTES:

TEMPLATE
NUMBER:

W20275_4

DATE:

10-15-98