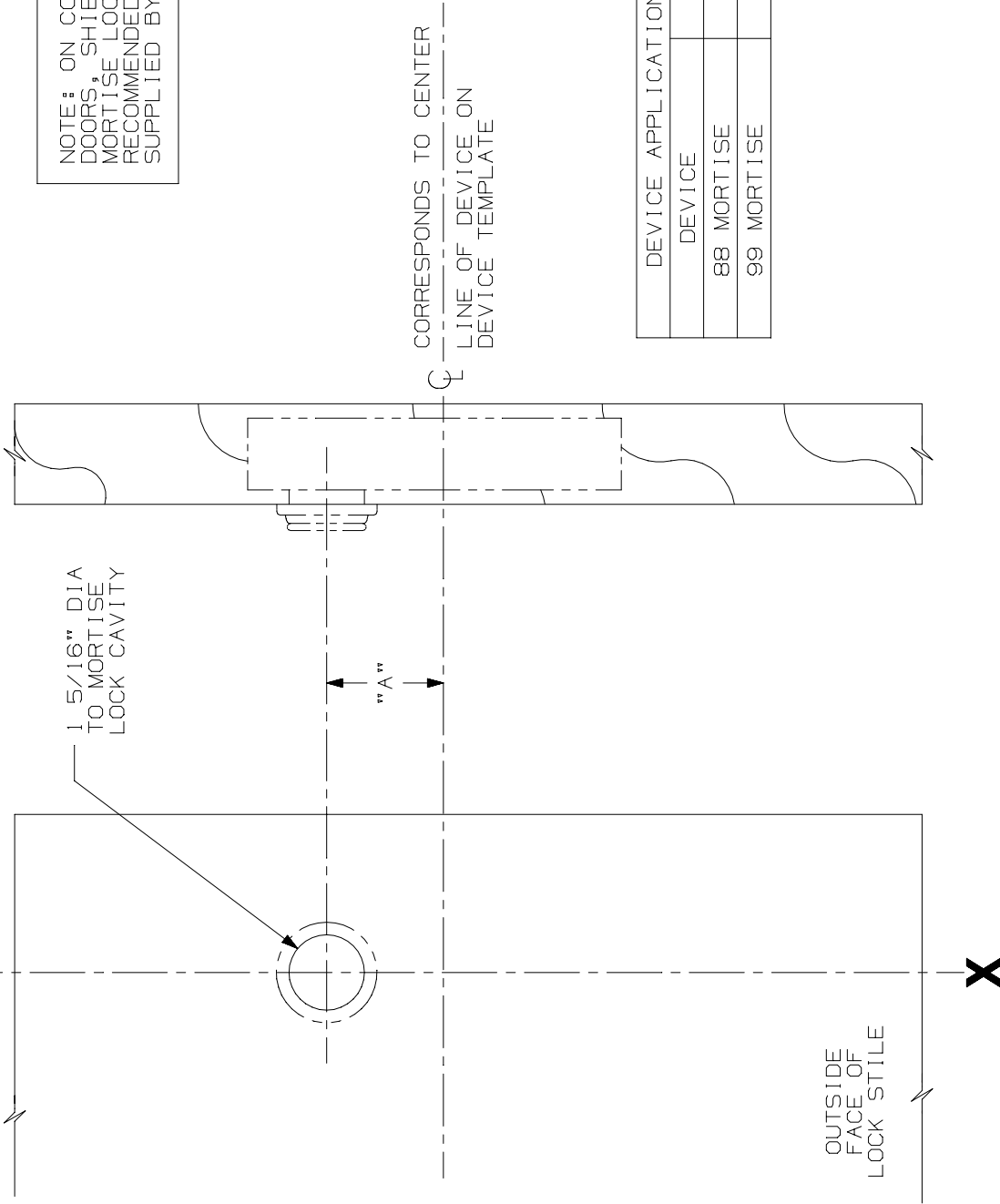


LINE X-X CORRESPONDS TO
LINE X-X ON DEVICE TEMPLATE



NOTE: ON COMPOSITE TYPE DOORS, SHIELDS FOR THE MORTISE LOCK & TRIM ARE RECOMMENDED, SUPPLIED BY OTHERS.

DEVICE APPLICATION SCHEDULE	
DEVICE	DIM. "A"
88 MORTISE	2 1/32"
99 MORTISE	2 7/32"

LHR SHOWN
RHR OPPOSITE

NOTE: WIRING TO E7500 & SS7500 LOCKS GO THRU DOOR & NOT DEVICE.
NOTE: MOUNTING HOLES TO BE PREPARED AT INSTALLATION ON DOOR.

FOR CUTOUTS ON INSIDE FACE OF DOOR SEE DEVICE TEMPLATE.

7500 MORTISE LOCK CYLINDER PREPARATION (WOOD DOOR)



NOTES:

TEMPLATE NUMBER:

W40019_1

DATE: 8-14-98