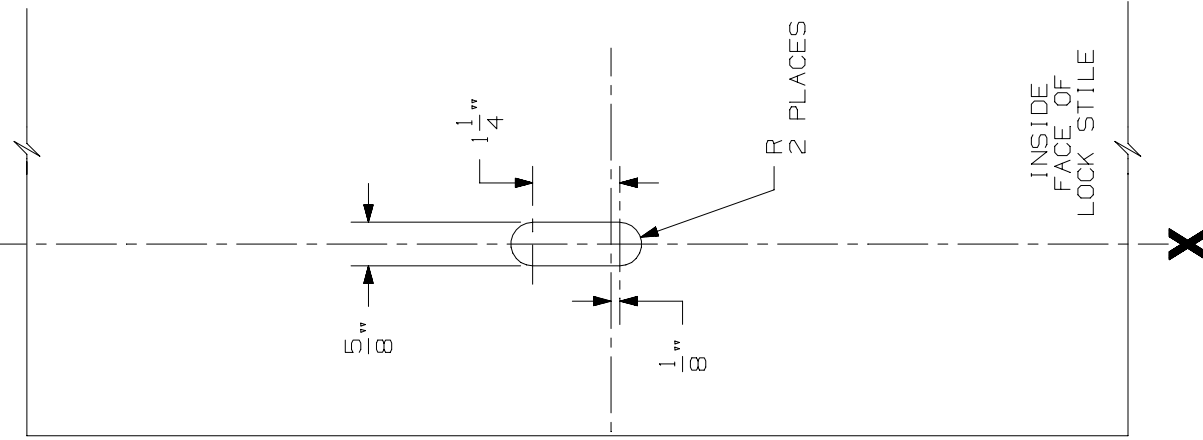


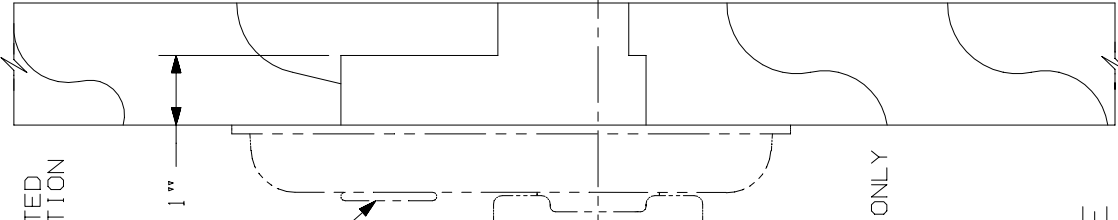
LINE X-X CORRESPONDS TO
LINE X-X ON DEVICE TEMPLATE

X



X

CYLINDER OMITTED
FOR "BE" FUNCTION



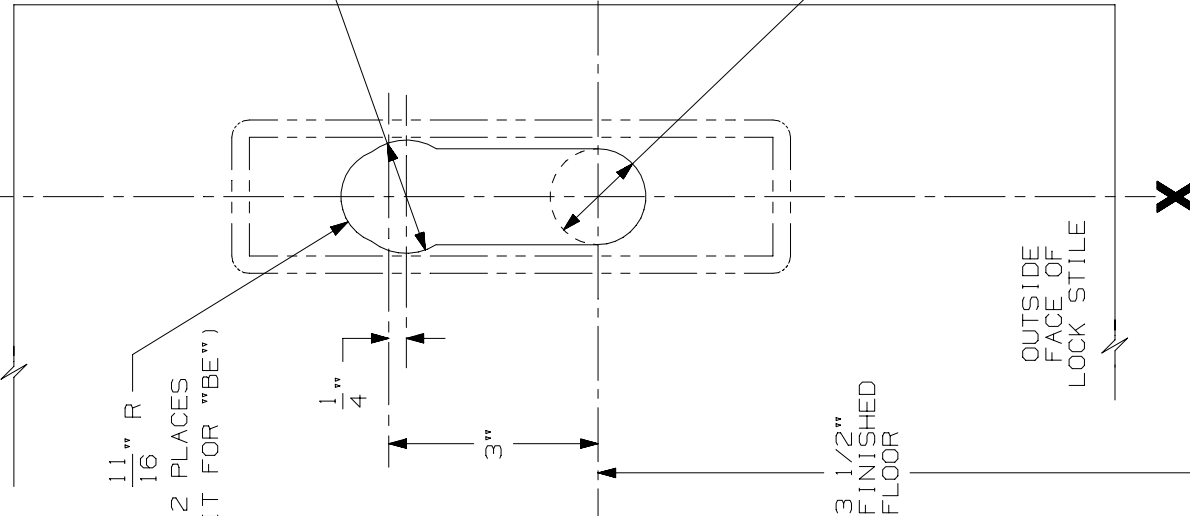
LHR SHOWN
RHR OPPOSITE

$\frac{11}{16}$ " R
2 PLACES
(OMIT FOR "BE")

$\frac{5}{8}$ " DIA
(OMIT FOR "BE")

Q OF THUMBTURN

$\frac{3}{8}$ " DIA
FOR "BE" FUNCTION ONLY



53 1/2"
TO FINISHED
FLOOR

OUTSIDE
FACE OF
LOCK STILE

X

DEVICE APPLICATION SCHEDULE
4427 VERTICAL ROD DEVICE
8827 VERTICAL ROD DEVICE
8827-F VERTICAL ROD DEVICE

NOTE: MOUNTING HOLES TO BE PREPARED
AT INSTALLATION ON DOOR.

FOR CUTOUTS ON INSIDE FACE OF DOOR
SEE DEVICE TEMPLATE.

377-T & 377-T-BE CONTROL
(WOOD DOOR)

IR VON DUPRIN®

⊖

NOTES:

TEMPLATE
NUMBER:

W40145_1

DATE:
8-20-98