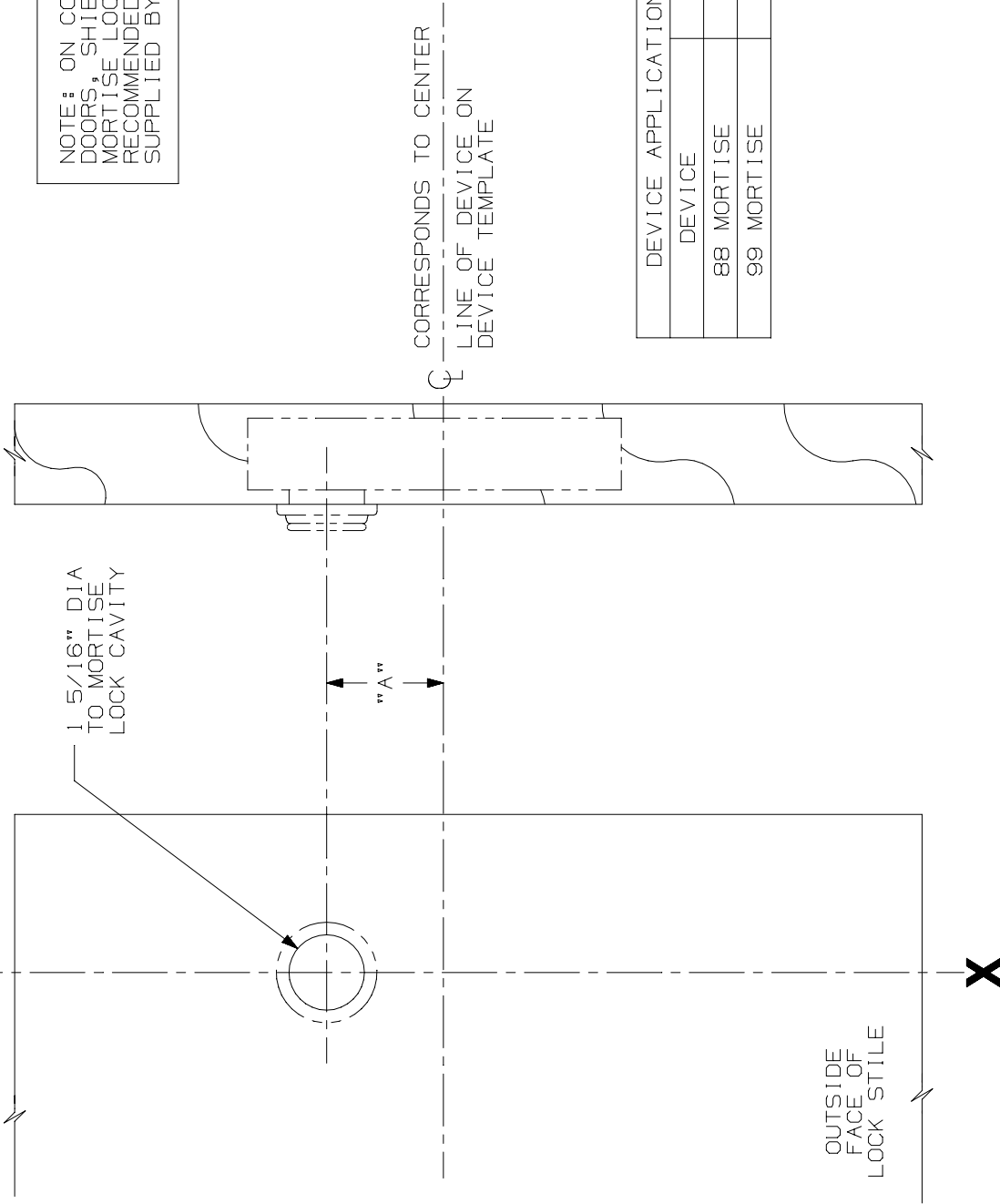




LINE X-X CORRESPONDS TO  
LINE X-X ON DEVICE TEMPLATE



NOTE: ON COMPOSITE TYPE  
DOORS, SHIELDS FOR THE  
MORTISE LOCK & TRIM ARE  
RECOMMENDED. OTHERS ARE  
SUPPLIED BY OTHERS.

CORRESPONDS TO CENTER  
LINE OF DEVICE ON  
DEVICE TEMPLATE

DEVICE APPLICATION SCHEDULE	
DEVICE	DIM. "A"
88 MORTISE	2 1/32"
99 MORTISE	2 7/32"

NOTE: WIRING TO E7500 & SS7500 LOCKS  
GO THRU DOOR & NOT DEVICE.

NOTE: MOUNTING HOLES TO BE PREPARED  
AT INSTALLATION ON DOOR.

LHR SHOWN  
RHR OPPOSITE

FOR CUTOUTS ON INSIDE FACE OF DOOR  
SEE DEVICE TEMPLATE.

7500 MORTISE LOCK CYLINDER  
PREPARATION (WOOD DOOR)



NOTES:

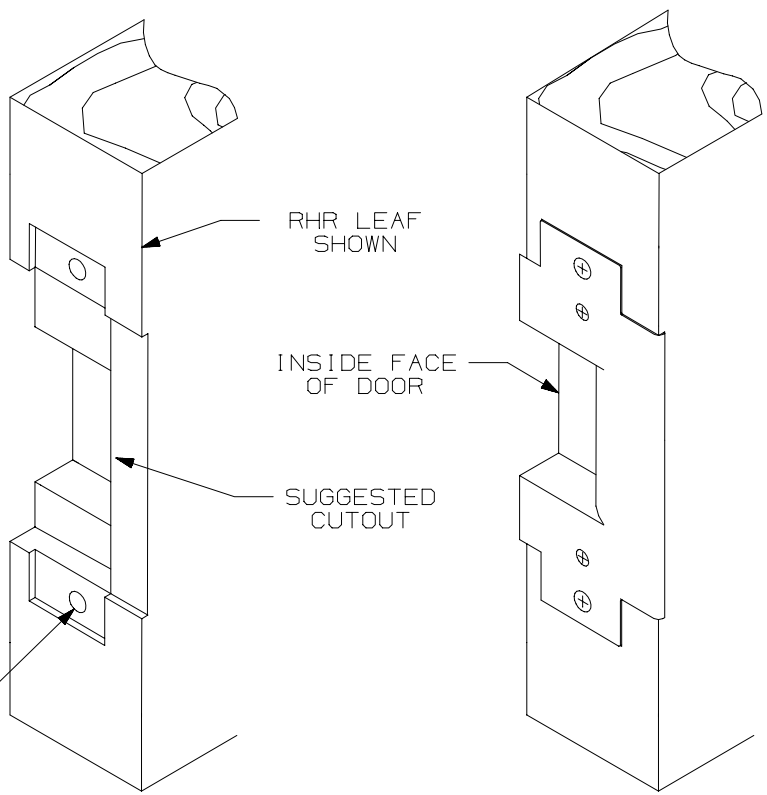
TEMPLATE  
NUMBER:

W40019\_1

DATE:

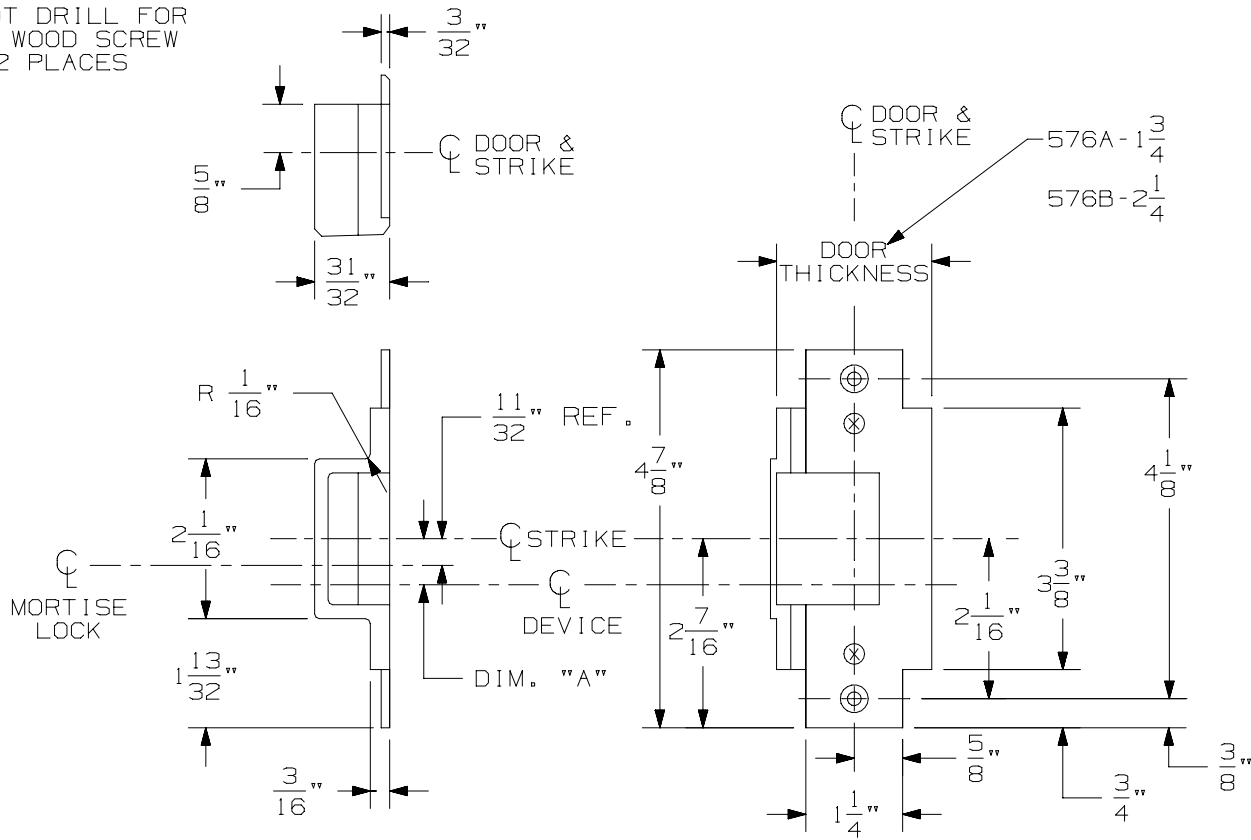
8-14-98





APPLICATION SCHEDULE	
DEVICE	DIM. "A"
9975 & 9975-F	11/16"
9875 & 9875-F	11/16"
8875 & 8875-F	1/2"
5575 & 5575-F	1/2"

PILOT DRILL FOR #12 WOOD SCREW 2 PLACES



LHR APPLICATION SHOWN  
RHR APPLICATION OPPOSITE

576A & 576B MORTISE STRIKE FOR MORTISE LOCK - WOOD DOOR



NOTE: SEE MASTER SHEET NO. 10001 FOR SUGGESTED REINFORCING.

TEMPLATE NUMBER: W30211\_3

DATE: 10-14-98